

Special fittings and accessories for medicinal baths

+ = especially recommendable

Tubmounted

- 01 **Filler and mixer battery 1" above plaster on handrail installed on footside part-no. ZM2001**
consisting of:
2 isolated built-in 1" valves, inlet made of plastic 1¼", showerinstallation with 2 cut off valves ½" warm + cold with showerhose in white and holder.
- 02 **Filler and mixer battery ½" under plaster on handrail installed on footside part-no. ZM2002**
consisting of:
chromium-plated mixer battery ½" with selection valve for shower, with showerhose in white and holder.
- 04 **Safety protection measurement for drinkwater according to DVGW DIN 1988 part-no. ZP5100**
if onsite is no measure for drinkwater protection
- 05 **Compressed air outlet valve 3/8" part-no. ZM2004**
plastic-coated, under plaster on handrail installed on footside, copper piping.
- 06 **O₂ outlet valve 3/8" part-no. ZM2005**
plastic-coated, under plaster on handrail installed on footside, copper piping.
- 07 **CO₂ outlet valve ¾" part-no. ZM2006**
chromium plated, under plaster on handrail installed on footside, with filling hose and suspension hook and copper piping.
- 08 **Emergency call device part-no. ZU1011**
with silicon-pushbutton in range of the patient, waterproof mounted, internal airhose to the connection box with built-in potential free contact.
- 09 **Drainage 2 ½" part-no. ZM2008**
made of plastic with plug.
- 10 **Filler and mixer battery with UP-Thermostatic mixer part-no. ZP5028**
nominal water flow: 48 l/min.
installed in the tub rim with 3-way-valve stop-filling-shower. Temperature safety lock at 38°C for scalding protection. Handshower with hose and support mounted on tub rim. 1 set of high pressure connection hoses.

20 **Compressed air outlet valve 3/8" part-no. ZM2012**
wall mounting.

21 **O₂ outlet valve 3/8" part-no. ZM2013**
wall mounting.

22 **CO₂ outlet valve ¾" part-no. ZM2014**
wall mounting.

Claddings

- 30 **All-round cladding part-no. ZM2015**
seamless on all 4 sides an the tub bottom, made of Polystyrol, color choice according to the color chart.
- 31 **Supply hose cladding part-no. ZM2230**
made of shock resistant polystyrol in color of cladding, with clamps to mount on tub legs.
- 33 **Subframe for tub part-no. ZM2018**
for tile.

Accessories

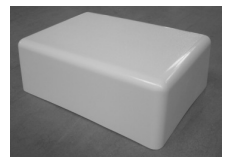
40 **1 pair safety plastic handles part-no. ZM2022**
+ in reach of hands.

41 **Tub shortener part-no. ZU1026**
consisting of: plastic frame with milled click points, footstep 370 x 230 mm, color: transparent



42 **Tub shortener integrated part-no. ZM5027**
made of plastic with footstep. It can placed in the

43 **safety ladder part-no. ZM2210**
made of glas fibre plastic, 1 step with anti-skid surface. Colour: white. Dimensiones: 500 x 360 x 180 mm



44 **air bubble bath grating part-no. ZM2030**
incl. 1 reinforced air connection hose, length 1500 mm (left out by delivery with blower unit). Supply pressure min. 1 bar, air quantity 200l/min.



Technical details subject to change

45 Blower unit in plastic casing part-no. ZM2035

with intensity- and bathtime control, including 1 reinforced air connection hose, length 2500 mm, 1 hose keeper and 1 wall mounting set.



46 Plastic grid, cantilevered part-no. ZU1032

consisting of: profiled bars crosswise combined, hygienic construction, closed hollows without slits, anti-fungus prepared, color grey, including angelframes 30 x 30 x 4 mm, with straps to embed in concrete. Dimension 100 x 50 cm (frame outside)

47 Plastic mat part-no. ZU1033

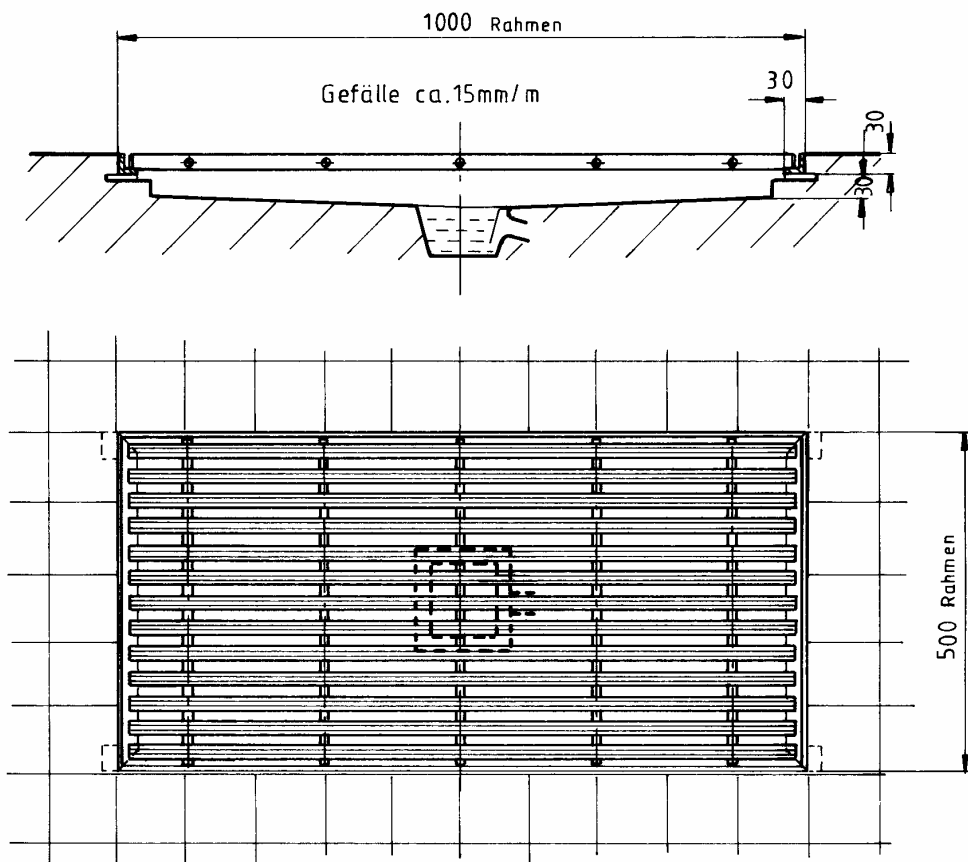
upper part made of plastic, double grooved, rounded edges, lower part high elastically, homogeneous darkgrey, upper strip lightgrey.

39 showerhead for maintaining oil baths part-no. ZW 7845

part-no. ZW 7845

Due to a special whirling technique oil is added to the bathwater from the dispensing head of the shower. The oil is stored in the bath water in the form of superfine drops due to the vortex of the shower water and remains bound to it. This leads to an extreme extension of the surface and allowing an intensive absorption by the skin. All this is reached with emulsifying and chemical agents. Applicable for every tub with 1/2" shower hose connectors.

Colour: white sleek,
Dimensions: Ø 30mm, length 150mm



Technical details subject to change

medicinal bath
model Wörishofen
type M 1840 AC
part-no. AM2020

consisting of:

Acrylic glass tub body, seamlessly deformed, glass-fibre reinforced, on 4 adjustable feet. Polystyrene cladding that covers seamlessly all 4 sides and the tub bottom.

Choice of colour according to colour chart.

Capacity approx. 250 l.

Dimensions: interior approx. 1600 x 650 x 500 mm,
exterior approx. 1840 x 850 x 680 mm.

Tub fittings:

Built-in filler and shower battery 1" under plaster, with 4 insulated built-in cocks for hot and cold water filling, 1 hand shower with hose and showerholder. Tub filler 1", all noticeable fittings chromium plated, 2 connecting high-pressure hoses and drainage and overflow connection 1½". Copper piping. Installation according DIN 1988.

Accessories: see overview sheet 08.02.01 and 08.02.02
special fittings and accessories



medicinal bath
model Sylt
type M 1840 AC
part-no. AM2050

consisting of:

Acrylic glass tub body, seamlessly deformed, glass-fibre reinforced, on 4 adjustable feet. Polystyrene cladding that covers seamlessly all 4 sides and the tub bottom.

Choice of colour according to colour chart.

Capacity approx. 250 l.

Dimensions: interior approx. 1600 x 650 x 500 mm,
exterior approx. 1840 x 850 x 680 mm.

Tub fittings:

Built-on filler and shower battery ¾", brass chromium plated, drainage and overflow connection 1½", brass chromium plated. 2 connecting high-pressure hoses. Copper piping, Installation according DIN 1988.

Accessories: see overview sheet 08.02.01 and 08.02.02
special fittings and accessories

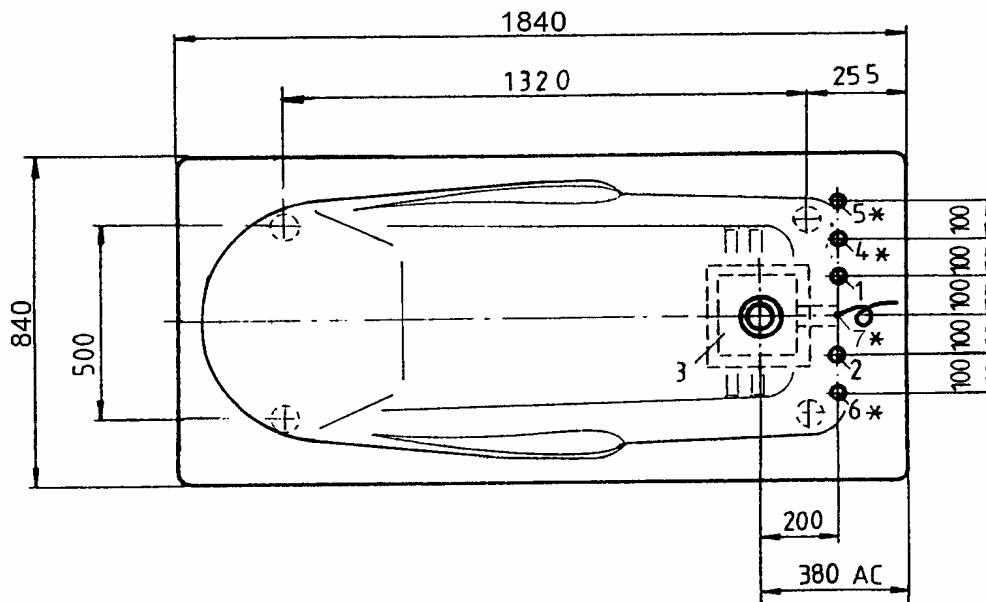
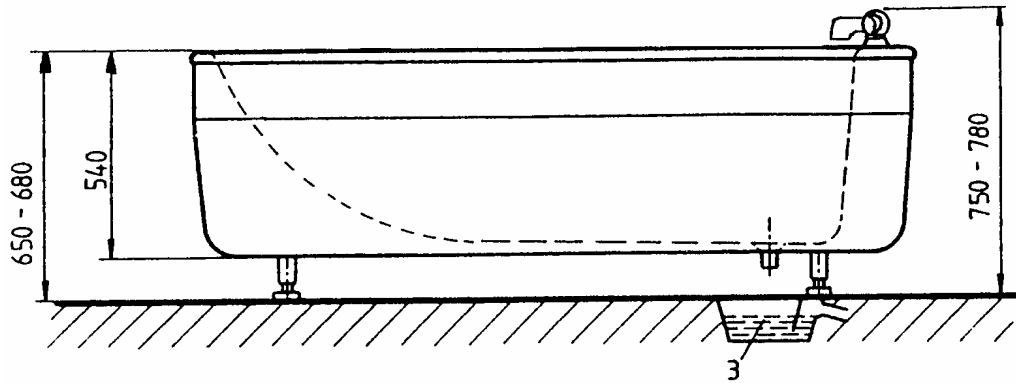
Technical details subject to change

Trautwein GmbH, 79312 Emmendingen

Tel.: 07641/4677-30 Fax: 07641/4677-70

Internet: <http://www.trautwein-gmbh.com>

08.02.03



medicinal bath
model Wörishofen/Sylt
type M 1840 AC

On-site connections

1. cold water sleeve 1", flush with floor (Sylt ¾")
2. warm water sleeve 1", flush with floor (Sylt ¾")
3. drainage with odour trap Ø 70
for drain valve 1½" (Ø 100 for drain valve 2½")
4. oxygen copper pipe 10 x 1 protruding approx. 10 cm above floor
5. air copper pipe 10 x 1 protruding approx. 10 cm above floor
6. water-CO₂-mixer sleeve ¾", flush with floor
7. if an automatic filling unit installed, was a 230V supply line necessary.

*only necessary if tub is equipped for it

On-site safety measures

stop cock for supply pipes
electric installation according to DIN IEC/VDE
If the tub was equipped with the emergency calling device,
must a 2-wire cable installed.

minimum doorwith for installation: 75 cm
weight: 104 Kg

Technical details subject to change

medicinal bath
model Wörishofen
type RD 1700 AC
part-no. AM2060

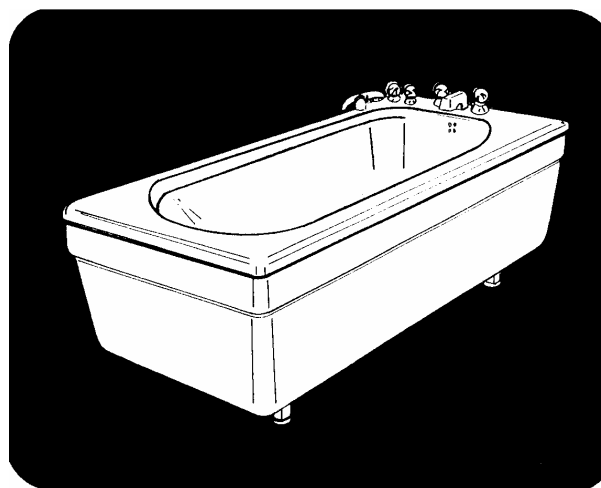
consisting of:

Acrylic glass tub body, seamlessly deformed, glass-fibre reinforced, on 4 adjustable feet. Polystyrene cladding. Choice of colour according to colour chart. Capacity approx. 200 l.
Dimensions: interior approx. 1535 x 730 x 420 mm,
exterior approx. 1700 x 800 x 680 mm.

Tub fittings:

Built-in filler and shower battery 1" under plaster, with 4 insulated built-in cocks for hot and cold water filling, 1 hand shower with hose and showerholder. Tub filler 1", all noticeable fittings chromium plated, 2 connecting high-pressure hoses and drainage and overflow connection 1½". Copper piping. Installation according DIN 1988.

Accessories: see overview sheet 08.02.01 and 08.02.02
special fittings and accessories



2

medicinal bath
model Sylt
type RD 1700 AC
part-no. AM2061

consisting of:

Acrylic glass tub body, seamlessly deformed, glass-fibre reinforced, on 4 adjustable feet. Polystyrene cladding. Choice of colour according to colour chart. Capacity approx. 200 l.
Dimensions: interior approx. 1535 x 730 x 420 mm,
exterior approx. 1700 x 800 x 680 mm.

Tub fittings:

Built-on filler and shower battery ¾", brass chromium plated, drainage and overflow connection 1½", brass chromium plated. 2 connecting high-pressure hoses. Copper piping, Installation according DIN 1988.

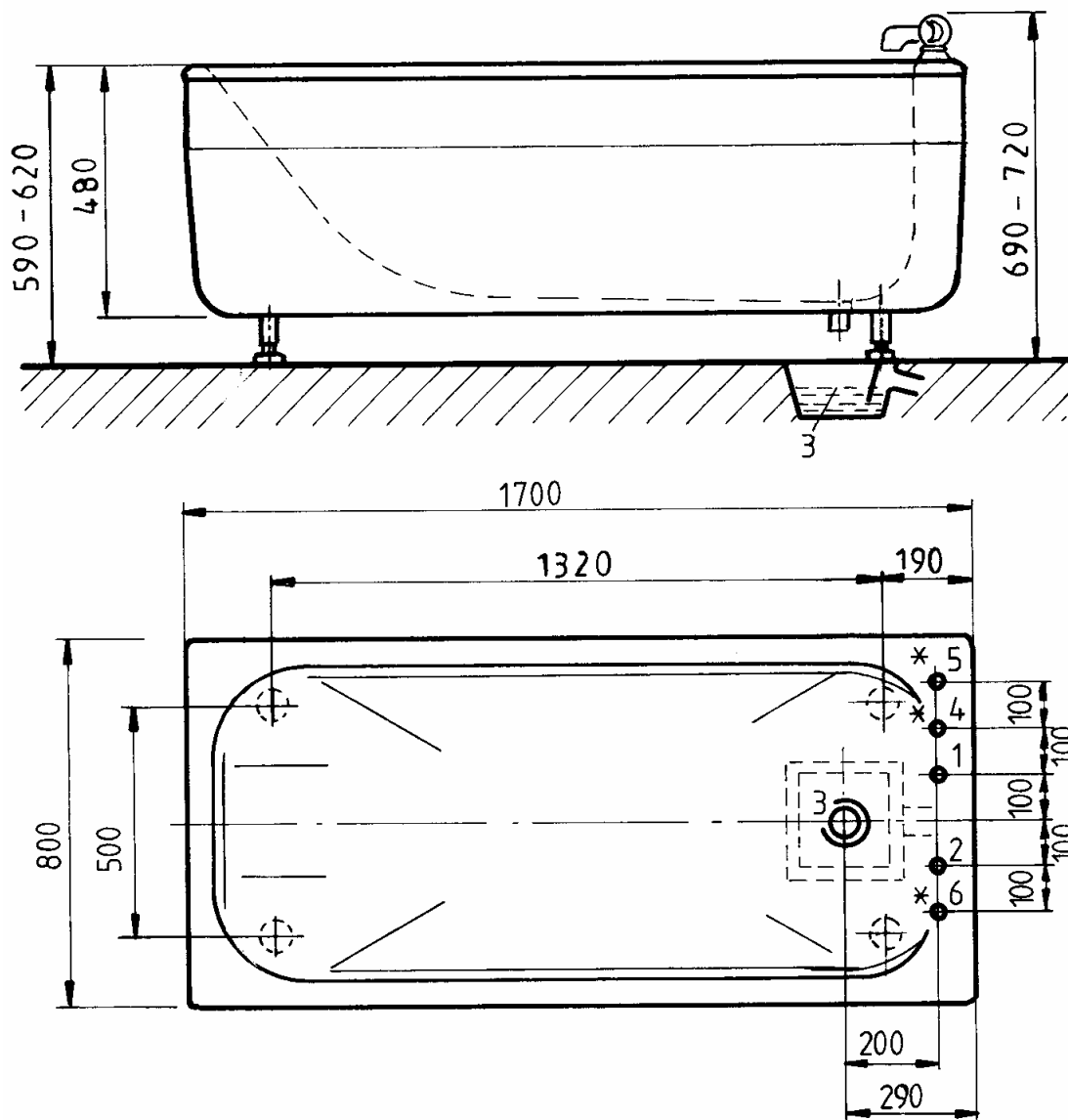
Accessories: see overview sheet 08.02.01 and 08.02.02
special fittings and accessories.

Technical details subject to change

Trautwein GmbH, 79312 Emmendingen

Tel.: 07641/4677-30 Fax: 07641/4677-70
Internet: <http://www.trautwein-gmbh.com>

08.02.04



medicinal bath
model Wörishofen/Sylt
type RD 1700 AC

On-site connections

1. cold water sleeve 1", flush with floor (Sylt ¾")
2. warm water sleeve 1", flush with floor (Sylt ¾")
3. drainage with odour trap \varnothing 70
for drain valve 1½" (\varnothing 100 for drain valve 2½")
4. oxygen copper pipe 10 x 1 protruding approx. 10 cm above floor
5. air copper pipe 10 x 1 protruding approx. 10 cm above floor
6. water-CO₂-mixer sleeve ¾", flush with floor

*only necessary if tub is equipped for it

On-site safety measures

stop cock for supply pipes
electric installation according to DIN IEC/VDE
If the tub was equipped with the emergency calling device,
must a 2-wire cable installed.

minimum doorwith for installation: 75 cm
weight: 114 Kg

Technical details subject to change

medicinal bath
model München
type M 2130 AC
part-no. AM2030

consisting of:

Acrylic glass tub body, seamlessly deformed, glass-fibre reinforced, on 4 adjustable feet. Plastic cladding that covers seamlessly all 4 sides and the tub bottom.

Choice of colour according to colour chart.

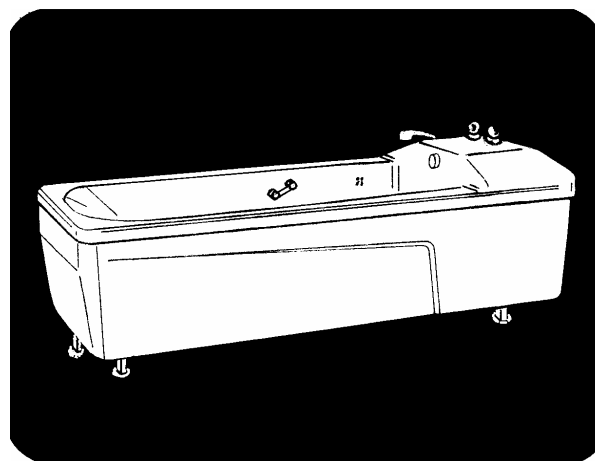
Tub useful volume 220 l.

Dimensions: interior approx. 1630 x 650 x 440 mm
exterior approx. 2130 x 830 x 680 mm

Tub fittings:

Built-in filler and shower battery 1" under plaster, with 4 insulated built-in cocks for hot and cold water filling, 1 hand shower with hose and showerholder. According DVGW Tub filler 1". Drainage and overflow connection 1½". 2 connecting high-pressure hoses.

Accessories: see overview sheet 08.02.01 and 08.02.02
special fittings and accessories

**2**

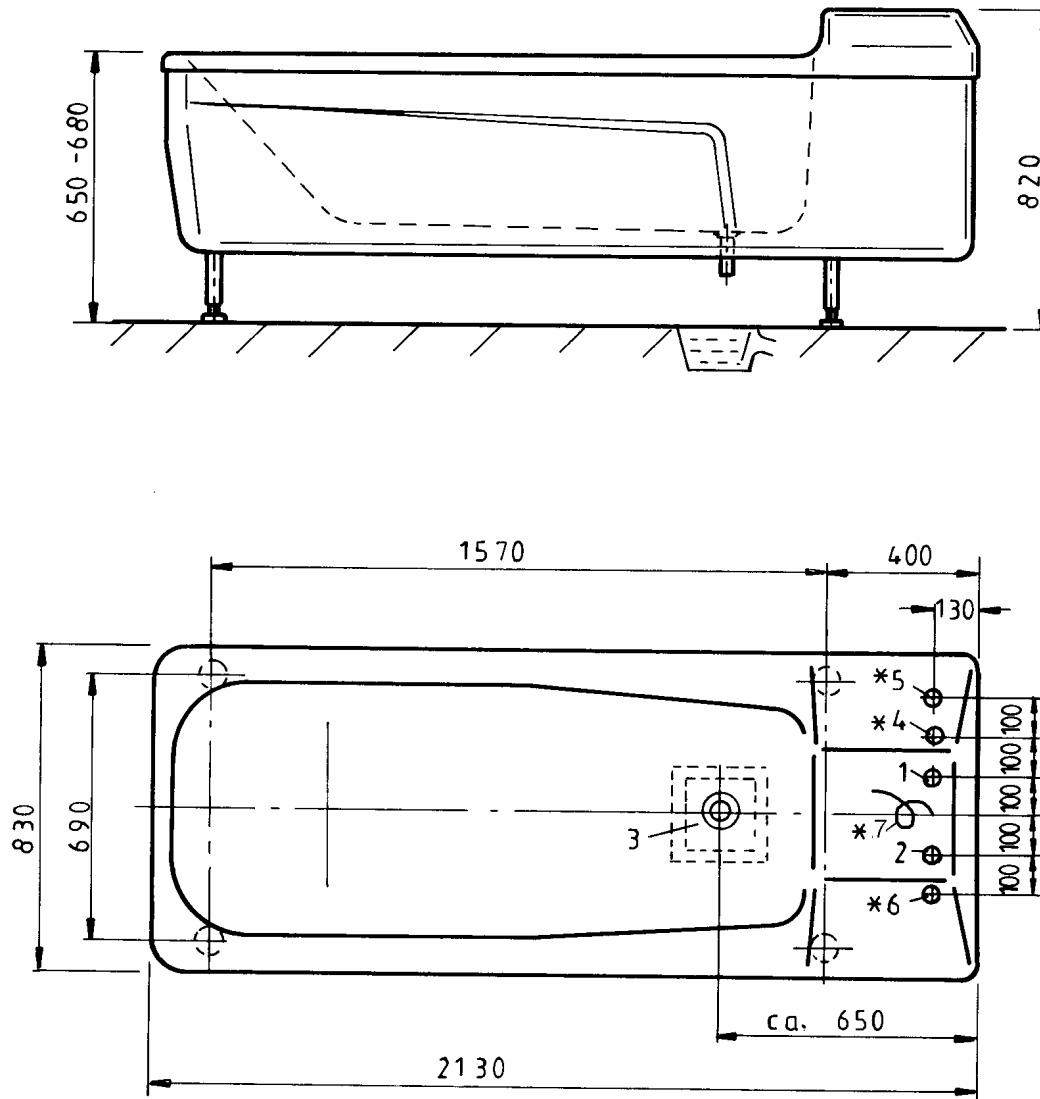
Technical details subject to change

Trautwein GmbH, 79312 Emmendingen

Tel.: 07641/4677-30 Fax: 07641/4677-70

Internet: <http://www.trautwein-gmbh.com>

08.02.05



medicinal bath
model München
type M 2130 AC
part-no. AM 2030

On-site connections

1. cold water sleeve 1", flush with floor (Sylt ¾")
2. warm water sleeve 1", flush with floor (Sylt ¾")
3. drainage with odour trap Ø 70
for drain valve 1½" (Ø 100 for drain valve 2½")
4. oxygen copper pipe 10 x 1 protruding approx. 10 cm
above floor
5. air copper pipe 10 x 1 protruding approx. 10 cm above
floor
6. water-CO₂-mixer sleeve ¾", flush with floor
7. if an automatic filling unit installed, was a 230V supply
line necessary.

*only necessary if tub is equipped for it

On-site safety measures

stop cock for supply pipes
electric installation according to DIN IEC/VDE
If the tub was equipped with the emergency calling device,
must a 2-wire cable installed.

minimum doorwith for installation: 75 cm
weight: 120 Kg

Technical details subject to change

medicinal bath
model Standard
type M 1840 AC
part-no. AM2070

consisting of:

Acrylic glass tub body, seamlessly deformed, glass-fibre reinforced for on-site tile.

Choice of colour according to colour chart.

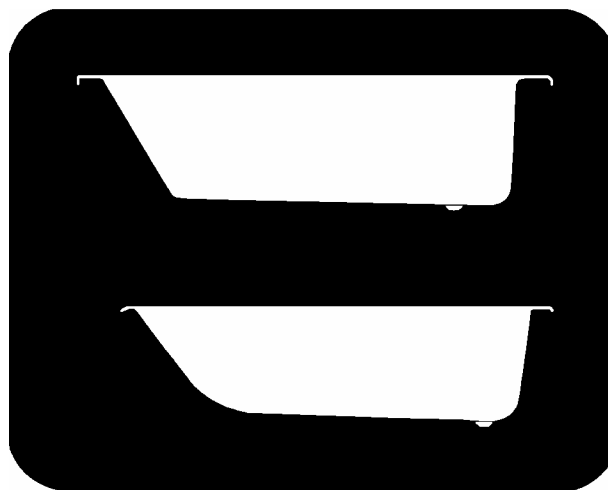
Capacity 250 l.

Dimensions: interior approx. 1600 x 650 x 500 mm
exterior approx. 1840 x 850 x 510 mm

Tub fittings:

Drainage and overflow connection 1½".

Accessories: see overview sheet 08.02.01 and 08.02.02
special fittings and accessories



medicinal bath
model Standard
type RD 1700 AC
part-no. AM2062

consisting of:

Acrylic glass tub body, seamlessly deformed, glass-fibre reinforced for on-site tile.

Choice of colour according to colour chart.

Capacity 200 l.

Dimensions: interior approx. 1535 x 730 x 420 mm
exterior approx. 1700 x 800 x 430 mm

Tub fittings:

Drainage and overflow connection 1½".

Accessories: see overview sheet 08.02.01 and 08.02.02
special fittings and accessories

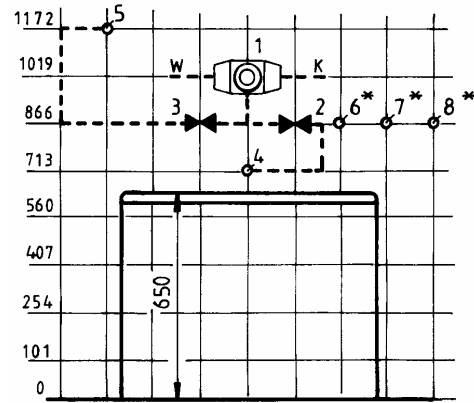
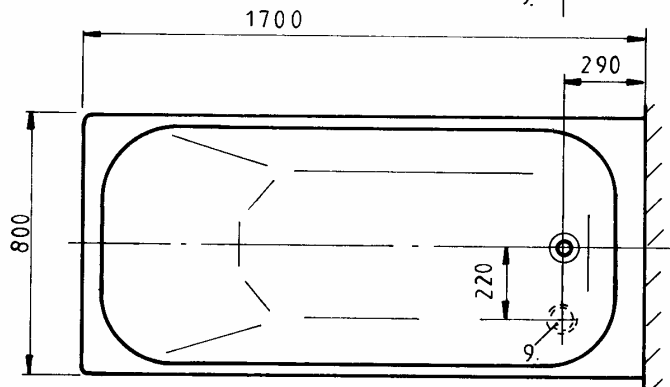
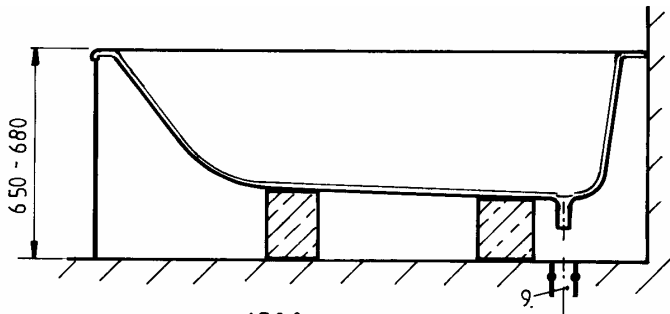
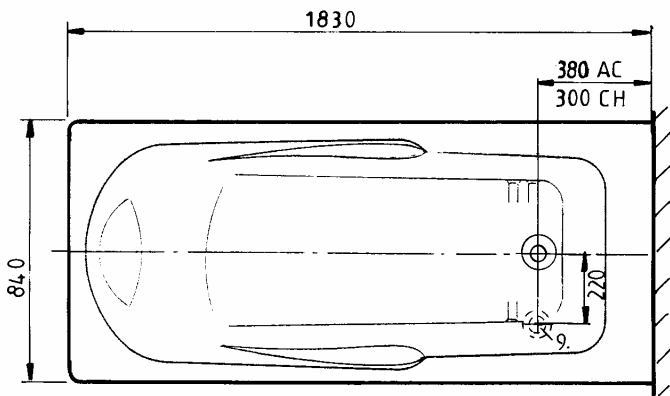
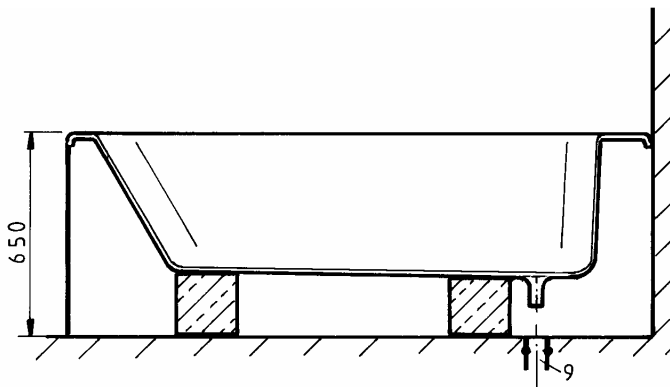
Technical details subject to change

Trautwein GmbH, 79312 Emmendingen

Tel.: 07641/4677-30 Fax: 07641/4677-70

Internet: <http://www.trautwein-gmbh.com>

08.02.06



medicinal bath
model Standard
type M 1840 AC
part no. AM 2070

medicinal bath
model Standard
type RD 1700 AC
part no. AM 2062

On-site connections

1. cold water sleeve 1", flush with floor (Sylt 3/4")
2. warm water sleeve 1", flush with floor (Sylt 3/4")
3. drainage with odour trap Ø 70 for drain valve 1 1/2" (Ø 100 for drain valve 2 1/2")
4. oxygen copper pipe 10 x 1 protruding approx. 10 cm above floor
5. air copper pipe 10 x 1 protruding approx. 10 cm above floor
6. water-CO₂-mixer sleeve 3/4", flush with floor

*only necessary if tub is equipped for it

On-site safety measures

stop cock for supply pipes
electric installation according to DIN IEC/VDE
minimum doorwith for installation: 75 cm
weight: 120 Kg

Technical details subject to change

CO₂ impregnating device
type 25
for 25 l/min.
part-no. AM2100

fully automatic with float switch (low voltage 24 V, 50 Hz).
consisting of:
mixer and steadying container made of stainless steel
(material nr. 1.4301).
Water connection with
- magnetic valve,
- water pressure reduction with manometer,
- stop valve.
Gas connection 1/2" with
- gas stop valve,
- gas reduction valve with manometer,
Water exit 1/2" with
- stop valve.
Excess pressure security with
- safety valve 1/2".

Dimensions:

height approx. 2020 mm, Ø approx. 320 mm, suitable for 2
medicinal tubs.

CO₂ impregnating device
type 50
for 50 l/min.
part-no. AM2101

fully automatic with float switch (low voltage 24 V, 50 Hz).
consisting of:
mixer and steadying container made of stainless steel
(material nr. 1.4301).
Water connection 3/4" with
- magnetic valve,
- water pressure reduction with manometer,
- stop valve.
Gas connection 1/2" with
- gas stop valve,
- gas reduction valve with manometer,
Water exit 3/4" with
- stop valve.
Excess pressure security with
- safety valve 1/2".

Dimensions:

height approx. 2020 mm, Ø approx. 320 mm, suitable for 5
medicinal tubs.

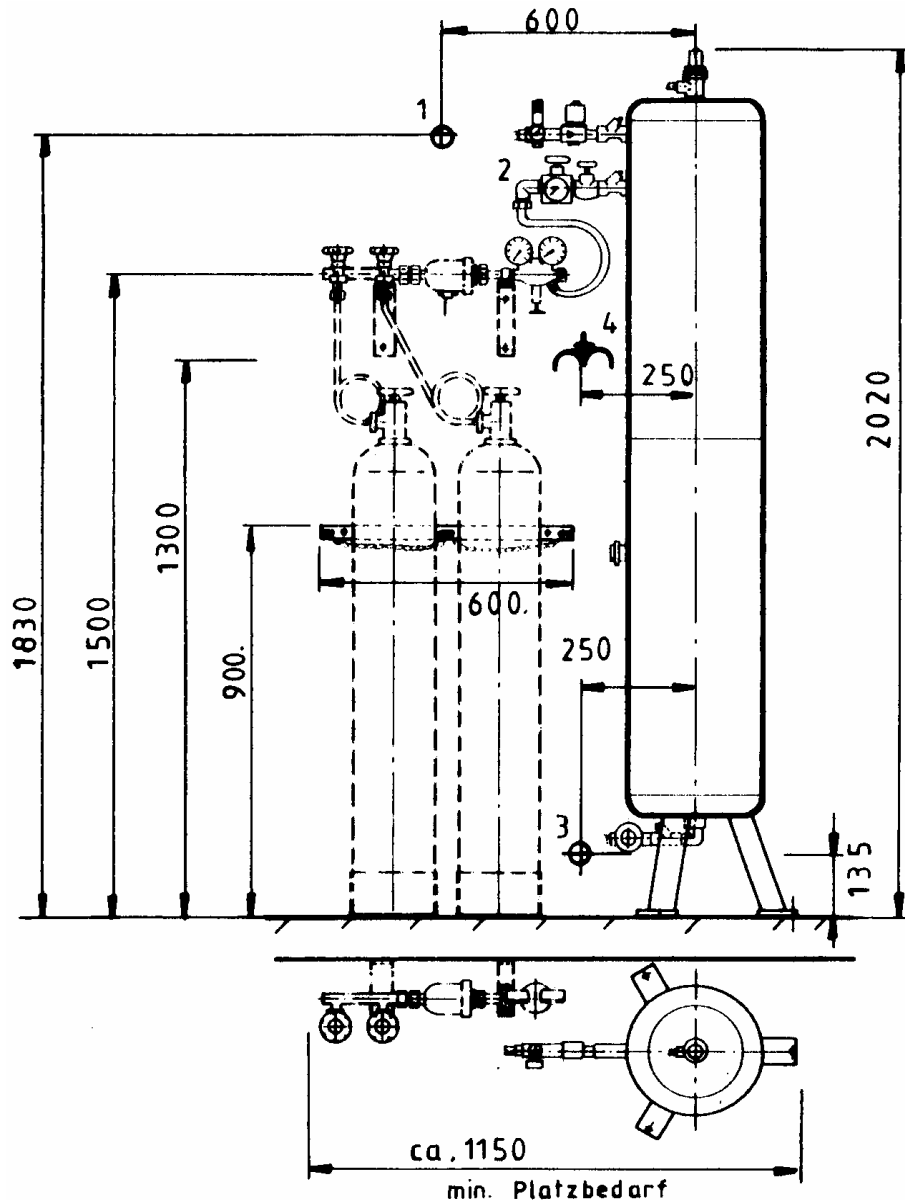
**2**

Technical details subject to change

Trautwein GmbH, 79312 Emmendingen

Tel.: 07641/4677-30 Fax: 07641/4677-70
Internet: <http://www.trautwein-gmbh.com>

08.02.07



CO₂ impregnating
device type 25/type 50
for 25l or 50l/min.

On-site connections

1. cold water supply with stop cock, connection 3/4"
2. CO₂-connection; pipe connection straight from reducer or by copper pipe 10 x 1
3. exit impregnated water connection 3/4" to consumer
4. sockets 230 V, 0,05 kW, connection 3 x 1,5 with protection switch, nominal fault current max. 30 mA

On-site safety measures

electric installation according to DIN IEC/VDE
Close to the device intend a drainage with odour trap
Ø 70 mm
weight: 130 Kg

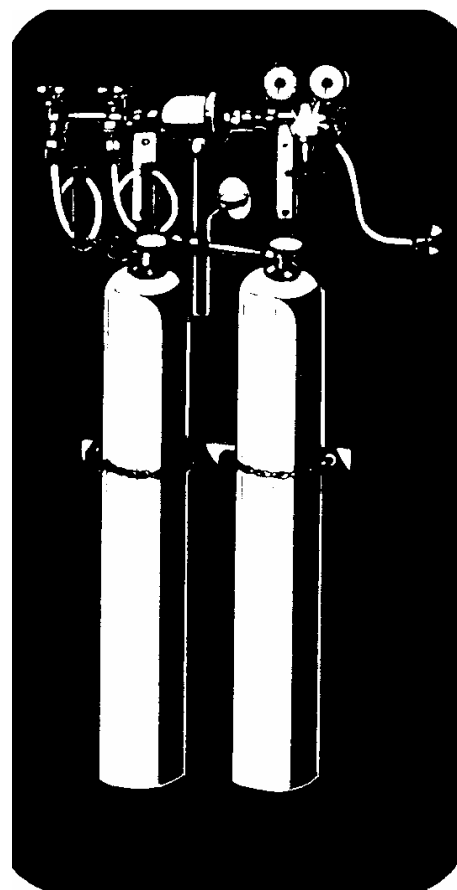
We recommend to switch this sockets with a timer on a weekly basis for energy saving. Setting in operation 1/2 h before taking up work is enough.

Technical details subject to change

CO₂-Reducer
model Standard
type 2 CO₂
part-no. AM2120

consisting of:

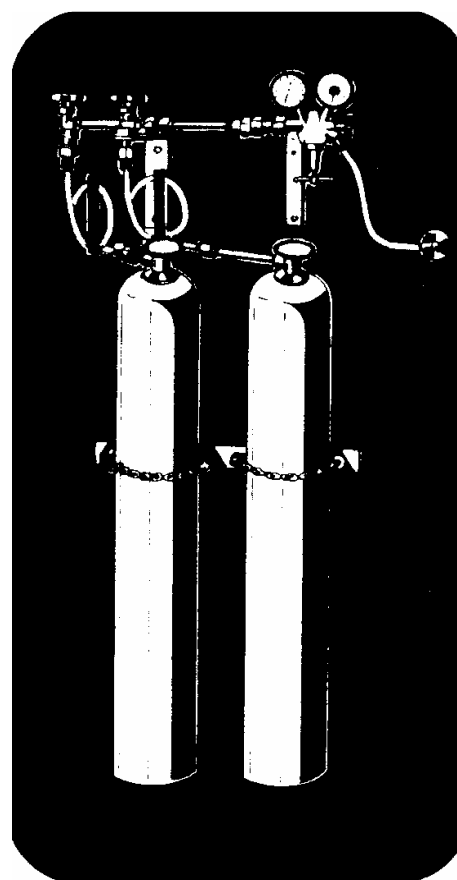
collector pipe with 2 connections, mounting, 2 intermediary valves, 2 sweeps, 1 flask mounting for 2 flasks, 1 CO₂ reduction valve for CO₂ with manometer, 1 anti-freeze, 230 V, 200 W, with cable and plug.

**2**

O₂-Reducer
model Standard
type 2 O₂
part-no. AM2121

consisting of:

collector pipe with 2 connections, mounting, 2 intermediary valves, 2 sweeps, 1 flask mounting for 2 flasks, 1 O₂ reduction valve for O₂ with manometer.

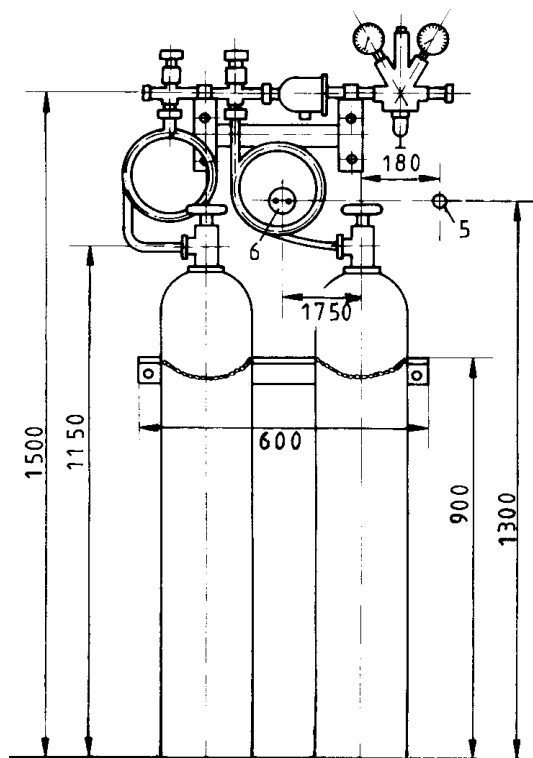


Technical details subject to change

Trautwein GmbH, 79312 Emmendingen

Tel.: 07641/4677-30 Fax: 07641/4677-70
Internet: <http://www.trautwein-gmbh.com>

08.02.08



CO₂-Reducer
 model Standard, type 2 CO₂
 part-no. AM2120

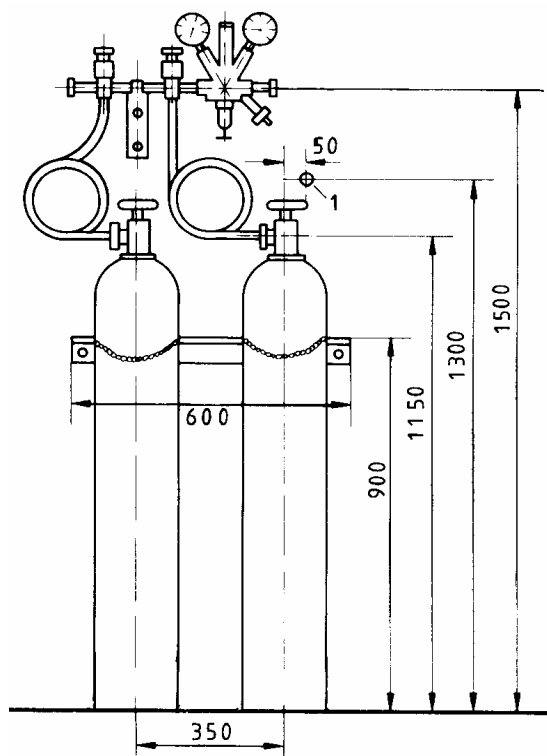
On-site connections

5. sleeve 3/8" flush with tiles, copper pipe 10x1
 6. socket 230 V, 50 Hz

We recommend to switch this socket with a timer on a weekly basis for energy saving. Setting in operation 1/2 h before taking up work is enough.

On-site safety measures

electric installation according to DIN IEC/VDE



Oxygene-Reducer
 model Standard, type 2 O₂
 parte-no. AM2121

On-site connections

1. sleeve 3/8" flush with wall, pipe to consumer copper-pipe 10x1

On-site safety measures

electric installation according to DIN IEC/VDE

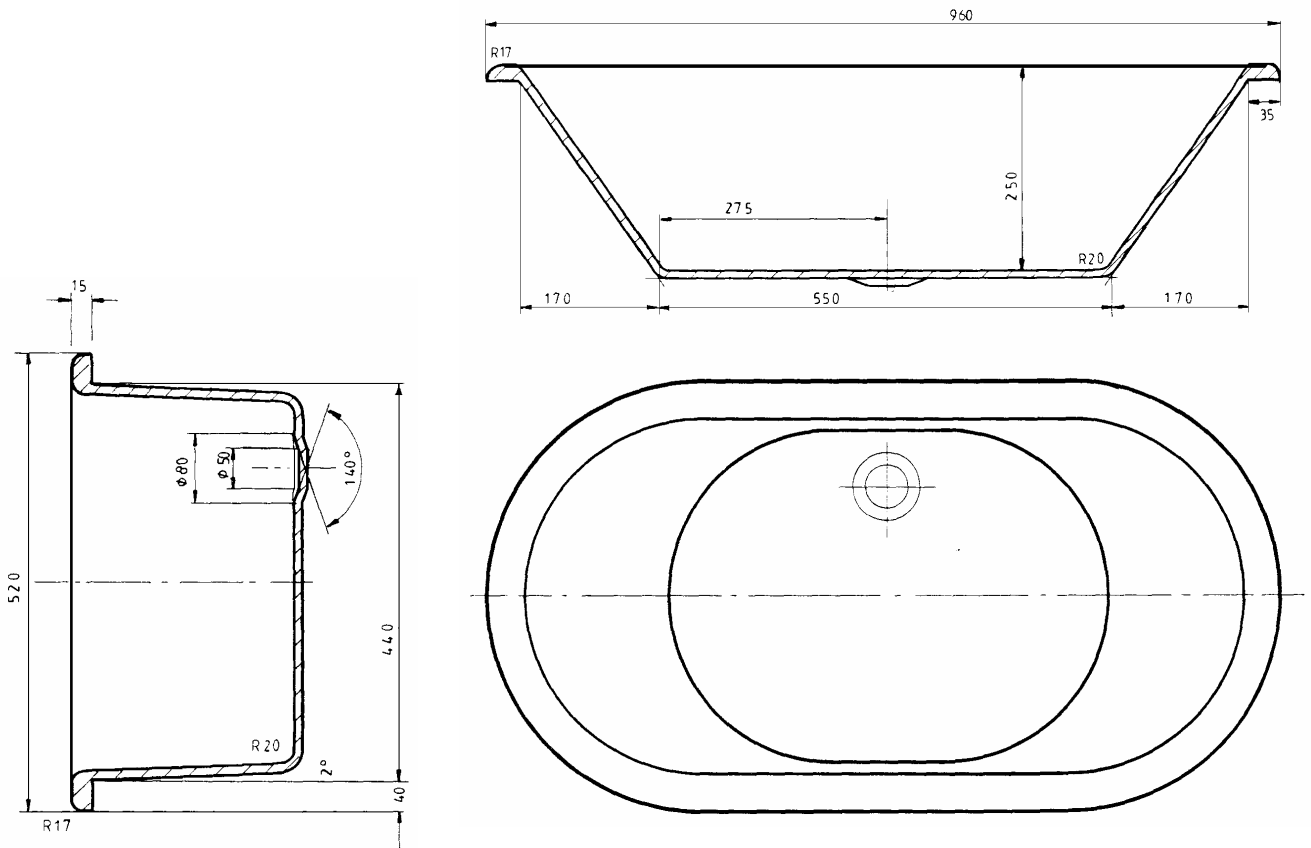
Technical details subject to change

Baby bath part-no. AS 7000

Polyester tub body, glass fibre reinforced, with sloping back-sides. For mounting in work boards.
Relief drainage 2½"

Choice of colour according to colour chart.
Dimensions: 960 x 520 x 260 mm,

2



Technical details subject to change

Trautwein GmbH, 79312 Emmendingen

Tel.: 07641/4677-30 Fax: 07641/4677-70

Internet: <http://www.trautwein-gmbh.com>

08.02.09