

Special fittings and accessories for underwatermassage- and Combinationappliances

+ = especially recommendable

Additional equipment

- 1 **Shower installation hot + cold water part-no. ZU1001**
consisting of:
1 isolated built-in KWC-valve, distributor and piping made of copper.
- 2 **Automatic filling unit part-no. ZU1109**
(additional charge)
consisting of: magneticvalve, control unit and on-, off-buttons.
- 4 **Whirlbath with 8 jets part-no. ZU1004**
consisting of:
8 plastic jets with adjustable KWC-valve 1" built-in isolated.
- 5 **Safety protection measurement for drinkwater according to DVGW DIN 1988 part-no. ZP5100**
if onsite is no measure for drinkwater protection.

EG-accessories

- 10 **Electrodes type B part-no. ZU1008**
+ patented, special size 2x150x250 and 2x400x250 mm.



- 11 **Faradic electrical part part-no. ZU1009**
elektronic controlled, for better irritation.

- 12 **Additional electrode part-no. ZU1020**
+ made of stainless steel V4A adjustable in heighth, length and crosswise with plastic-coated power connector.



- 13 **Electro-massagebrush part-no. ZU1021**
with rubber cable and plastic-coated power connector.



Attached accessories

- 20 **Emergency call device part-no. ZU1011**
with silicon-pushbutton in range of the patient, waterproof mounted, internal airhose to the connection box with built-in potential free contact.



1

Loose accessories

- 30 **Adjustable headrest for butterfly tub + part-no. ZU1077**
for attachment at the tub rim, made of plastic, with waterproof strap and neck cushion.
- 32 **Adjustable headrest part-no. ZU1019**
+ for attachment at the tub rim, made of plastic, with waterproof strap and neck cushion.
- 33 **Bayromed-active oxygen granules + part-no. ZR0100**
for disinfection of the pump circuit and the tub.
- 34 **Adisan-cleaning agent + part-no. ZR0200**
for the pump circuit and the tub.
- 35 **Supply hose cladding part-no. ZU1116**
+ made of shock resistant Polystyrol in main cladding color, with clamps for mounting on tub legs.
- 36 **Backrest part-no. ZU1023**
+ consisting of:
1 frame made of stainless steel, plastic coated, 1 frame cover made of foamed grating material, 90°C machine-washable and drier resistant. Color white with velcro fastening for easy exchange.



МЕД СОЮЗ

+7 (495) 308-9009

многоканальный

www.medsoyuz.ru

E-mail: ru@medsoyuz.ru

Technical details subject to change

Trautwein GmbH, 79312 Emmendingen

Tel.: 07641/4677-30 Fax: 07641/4677-70

Internet: <http://www.trautwein-gmbh.com>

08.01.02

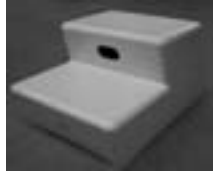
- 37 **Rotation-Pulsator jet made of plastic part-no. ZU1024**
with a rubber-ring for protection, for creation of a rotating massagejet, with special bearing.



- 41 **CO₂ reducer part.no. AM2120**
model standard type 2 CO₂ refer tech. sheet 06.02.08.

- 42 **Grip- and gymnastic-bar part-no. ZU1029**
with special fixation-straps, chromium-plated.

- 38 **Safety ladder part-no. ZU1025**
made of glas fibre plastic material, 2-steps with anti slide coating. Color: white.
Dimensiones:
width 500 mm, length 700 mm, height 350 mm.



- 43 **storage belt 1300 mm part-no. ZU1029**
with special fixation-straps, chromium-plated.

- 44 **storage belt 2100 mm part-no. ZU1030**
with special fixation-straps, chromium-plated.

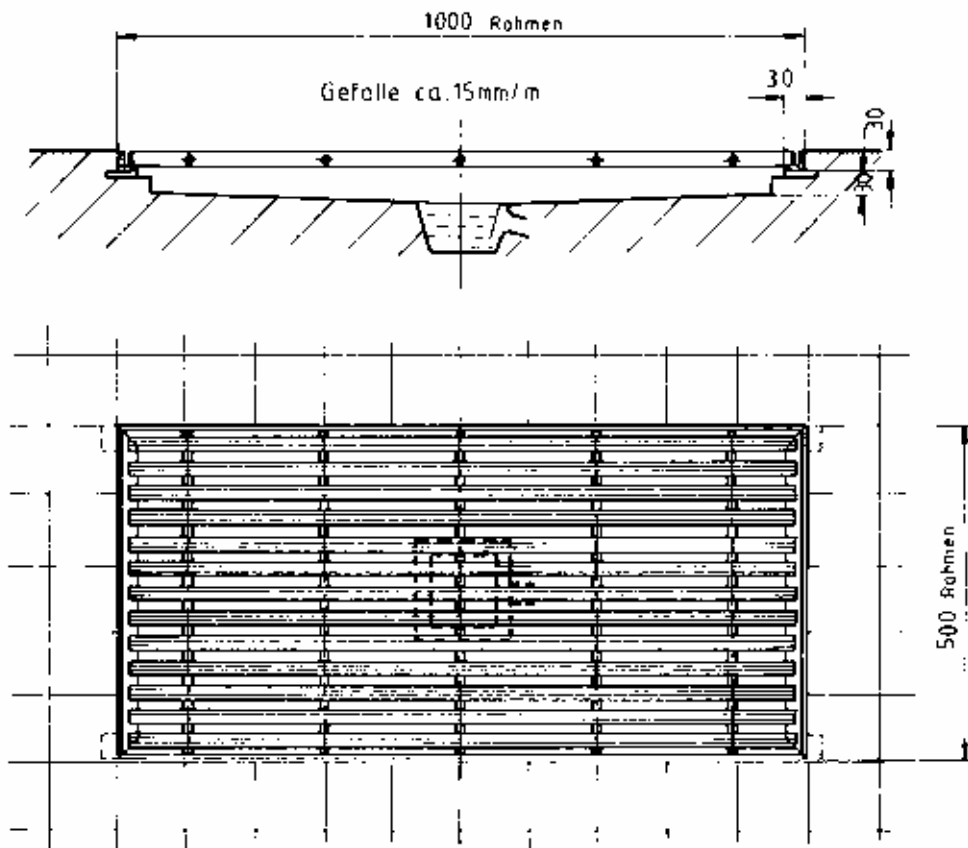
- 45 **Plastic grid, cantilevered part-no. ZU1032**
consisting of: profiled bars crosswise combined, hygienic construction, closed hollows without slits, anti-fungus prepared, color grey, including angelframes 30 x 30 x 4 mm, with straps to embed in concrete. Dimension 100 x 50 cm (frame outside).

- 39 **Safety ladder part-no. ZU1025**
made of glas fibre plastic material, 1-step with anti slide coating. Color: white.
Dimensiones:
width 500 mm, length 360 mm, height 180 mm.



- 46 **Plastic mat part-no. ZU1033**
upper part made of plastic, double grooved, rounded edges, lower part high elastically, homogeneous darkgrey, upper strip lightgrey.

- 40 **Tub shortener made of plastic part-no. ZU1026**
consisting of: plastic frame with milltred nuts, foot-plate 353 x 245 mm. Color: white.



Technical details subject to change

Combinationappliance
model Wörishofen
type UW GI 1800 AC
part-no AU1070

for the application of underwater jet massages and electrogalvanic baths with the possibility to superimpose 4 different pulsed currents as well as for standard electrogalvanic baths, consequently being suitable for all applications in the electro-galvanical-bath, consisting of:

Acrylic glass tub body, seamlessly deformed, glass-fibre reinforced, on 4 adjustable feet with rubber protecting cap. Polystyrene cladding. Capacity 600 l. Choice of colour according to colour chart.

Dimensions: interior approx. 1800 x 800 x 600 mm,
exterior approx. 2320 x 940 x 900 mm.

tub fittings:

2 handles 1200 mm long, 1 plastic suction shell with sieve, 1 drainage and overflow connection 2 1/2". 1 plastic pump attached to the tub, capacity 200 l/min, 3 phase current 230/400 V, 1,6 kW, IP 44, with 1 motor protection switch. 1 iso transformer 230/24 V TÜV, 1 ON/OFF switch, isolated built-in cocks for pressure control, hot and cold water filling, fittings made of red brass, 1 hand shower with holder, 1 tub inlet 1" made of plastic, 1 precision-manometer, 2 connecting high-pressure hoses 1", installation according to DIN 1988. 1 pressure pipe, 1 set of plastic spray heads 40/60/80/100/120/140 mm².

Tub hygienic according to DIN VDE 0750 (IEC 601-1) and MPBetriebV with Adisan (ZR0200) cleaning agent and Bayromed (ZR0100) active oxygen.

Integrated, micro-processor controlled electrical element, type GI - WA:

As a serviceable component easy to change

- Control of the currents and tensions via hardware and software.
- Galvanic current which can be superimposed by four different pulsed currents
- Numerical display of the currents and the voltages, separated for galvanic and pulsed current.
- Membrane keyboard for simple operation with easily understandable symbols

3 functional keys ON, OFF and start

16 keys for individually selectable polarity of electrodes (plus, minus, off) with light indicator

1 key for pole commutator

2 keys for galvanic current up and down

2 keys for superposition of pulsed current up and down

2 timer keys, individually adjustable, with automatic switch-off (range 1 - 30 min.)

1 indicator of error message

1 indicator for capacitor charge

9 special steel electrodes type B (patented) material 1.4571, arranged in a sliding way to suit the body, with protective corner profiles made of plastics.

The unit is a compact design, all connections via plug-type connectors.

Supply voltage: 24 V AC

Power consumption: 80 W

Output voltage (galv./pulsed current): 0 - 24 V DC /0 - 7 V AC

Output current (galv./pulsed current): 0 - 2 A DC /0 - 300 mA AC

CE - Sign



Following parts are production line included:

Part-no. SU0010

4 selector keys for the superposition of the following pulsed currents:

Monophase (sinusoidal half-wave) 50 Hz

e.g. for the increase of the muscular tonus, the improvement of the blood circulation and for the treatment of pains

Ultra irritation current rectangle 140 Hz

ratio pulse/pause 2/5

e.g. for the treatment of myalgia, lumbalgia and muscular hypertonia

Rectangular threshold current 50 Hz, with 0,5 Hz sinusoidal superposition

e.g. for the efficient treatment of myalgia, neuralgia, lumbalgia and for electro-gymnastics for muscular contraction and reinforcement.

Rectangular threshold current 50 Hz, with 2 Hz sinusoidal superposition

e.g. for the efficient treatment of strain, contusions and haematomas

Part-no. SU0030

stainless steel electrodes type B (patented) removeable and slipable for contoured treatment. Inclusive suspension.

Part-no. SU0050

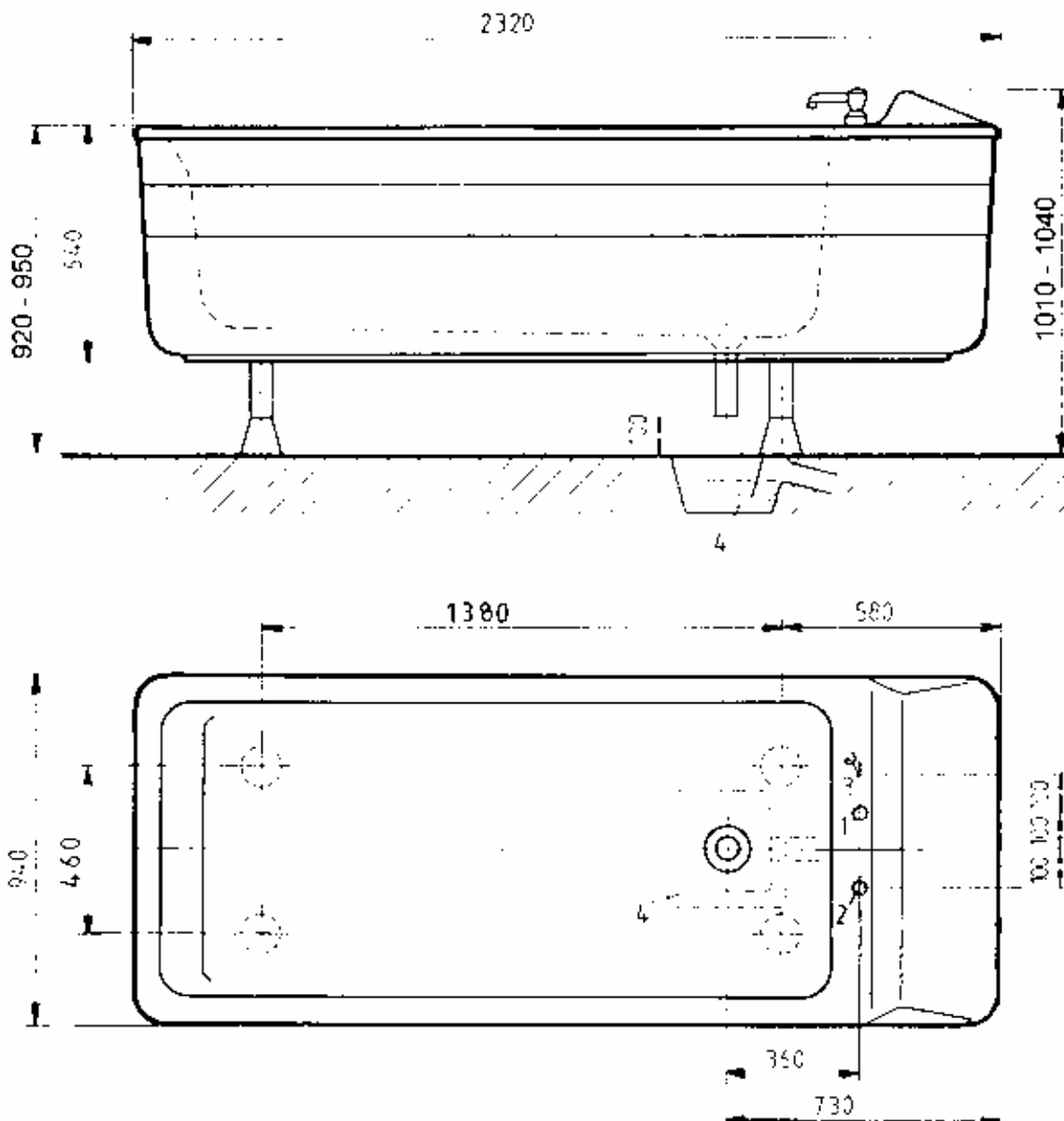
Dry run protection for the pump.

Part-no. SU0070

Filling unit with tub inlet 1 1/4" and filling valves for warm- and coldwater each 1".

Optimal extras: see overview sheet 08.01.01 and 08.01.02
Special fittings and accessories

Technical details subject to change



Combinationappliance
model Wörishofen
type UW GI 1800 AC
part-no. AU1070

On-site connections

1. cold water sleeve 1", flush with floor
2. warm water sleeve 1", flush with floor
3. electr. floor connection, 1,5m long, 3 phase current, 400 V/3/N/SL 1,5 mm², motor 1,6 kW, 4,2 A
4. Drainage with odour trap \varnothing 100. 40 mm sunk, capacity 3,5 l/sec. In case of flush or raised installation, the flow-off capacity must be throttled down to 2 l/sec. Free outlet min. 10 cm.

On site safety measures:

Stop cock cold and warm water. All-pole circuit breaker within the room. Protection switch, nominal fault current max. 30 mA, UB=24V. Within reach of the tub (2,50 m above, 1,25 m to the side) no parts, appliances, etc. conducting or connected to earth potential.

German safety regulations. Electric installation according to DIN IEC/VDE

If the tub was equipped with the emergency calling device, must a 2-wire cable installed.

Minimum door width for installation: 79 cm.

Weight: 180 Kg

Technical details subject to change

Combinationappliance
model Landshut
type UW GF 1800 AC
part-no. AU1061

for the application of underwater jet massages and electrogalvanic baths, consisting of:

Acrylic glass tub body, seamlessly deformed, glass-fibre reinforced, on 4 adjustable feet with rubber protecting cap. Polystyrene cladding. Capacity 600 l. Choice of colour according to colour chart.

Dimensions: interior approx. 1800 x 800 x 600 mm,
exterior approx. 2320 x 940 x 900 mm.

tub fittings:

2 handles 1200 mm long, 1 plastic suction shell with sieve, 1 drainage and overflow connection 2 1/2". 1 plastic pump attached to the tub, capacity 200 l/min, 3 phase current 230/400 V, 1,6 kW, IP 44, with 1 motor protection switch. 1 iso transformer 230/24 V TÜV, 1 ON/OFF switch, isolated built-in cocks for pressure control, hot and cold water filling, fittings made of red brass, 1 hand shower with holder, 1 tub inlet 1" made of plastic, 1 precision-manometer, 2 connecting high-pressure hoses 1", installation according to DIN 1988. 1 pressure pipe, 1 set of plastic spray heads 40/60/80/100/120/140 mm².

Tub hygienic according to DIN VDE 0750 (IEC 601-1) and MPBetreibV with Adisan (ZR0200) cleaning agent and Bayromed (ZR0100) active oxygen.

Integrated, micro-processor controlled electrical element, type GF - WA:

As a serviceable component easy to change

- *Control of the currents and tensions via hardware and software.*
 - *Numerical display of the current and the voltage.*
 - *Membrane keyboard for simple operation with easily understandable symbols*
- 3 functional keys ON, OFF and start
16 keys for individually selectable polarity of electrodes (plus, minus, off) with light indicator
1 key for pole commutator
2 keys for galvanic current up and down
1 key for faradic current in preparation
2 timer keys, individually adjustable, with automatic switch-off (range 1 - 30 min.)
1 indicator of error message
1 indicator for capacitor charge
9 special steel electrodes type B (patented) material 1.4571, arranged in a sliding way to suit the body, with protective corner profiles made of plastics.



The unit is a compact design, all connections via plug-type connectors.

Supply voltage: 24 V AC
Power consumption: 80 W
Output voltage: 0 - 24 V DC
Output current: 0 - 1,5 A DC
CE - Sign

Following parts are production line included:

Part-no. SU0030

stainless steel electrodes type B (patented) removeable and slidable for contoured treatment. Inclusive suspension.

Part-no. SU0050

Dry run protection for the pump.

Part-no. SU0070

Filling unit with tub inlet 1 1/4" and filling valves for warm- and coldwater each 1".

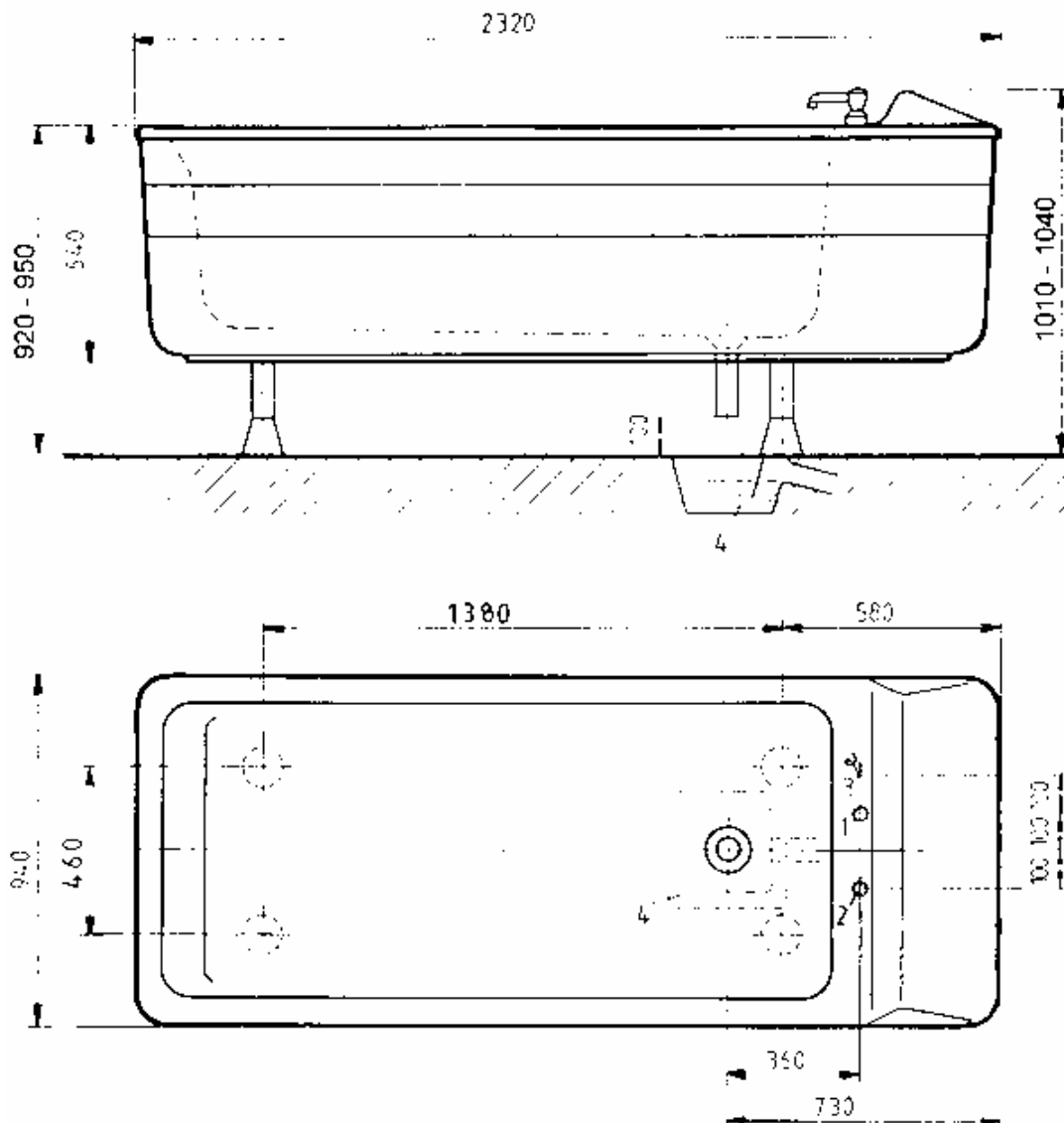
Optimal extras: see overview sheet 08.01.01 and 08.01.02
Special fittings and accessories

Technical details subject to change

Trautwein GmbH, 79312 Emmendingen

Tel.: 07641/4677-30 Fax: 07641/4677-70
Internet: <http://www.trautwein-gmbh.com>

08.01.04



Combinationappliance
model Landshut
type UW GF 1800 AC
part-no. AU1061

On-site connections

1. cold water sleeve 1", flush with floor
2. warm water sleeve 1", flush with floor
3. elektr.-floor connection, 1,5m long, 3 phase current, 400 V/3/N/SL 1,5 mm², motor 1,6 kW, 4,2 A
4. Drainage with odour trap \varnothing 100. 40 mm sunk, capacity 3,5 l/sec. In case of flush or raised installation, the flow-off capacity must be throttled down to 2 l/sec. Free outlet min. 10 cm.

On site safety measures:

Stop cock cold and warm water. All-pole circuit breaker within the room. Protection switch, nominal fault current max. 30 mA, UB=24V. Within reach of the tub (2,50 m above, 1,25 m to the side) no parts, appliances, etc. conducting or connected to earth potential.

German safety regulations. Electric installation according to DIN IEC/VDE

If the tub was equipped with the emergency calling device, must a 2-wire cable installed.

Minimum door width for installation: 79 cm.

Weight: 180 Kg

Technical details subject to change

Combinationappliance
model Boppard
type UW GI 1800 AC
part-no. AU1145

for the application of underwater jet massages and electrogalvanic baths with the possibility to superimpose 4 different pulsed currents as well as for standard electrogalvanic baths, consequently being suitable for all applications in the electro-galvanical-bath, consisting of:

Acrylic glass tub body, seamlessly deformed, glass-fibre reinforced, on 4 adjustable feet with rubber protecting cap. Polystyrene cladding. Capacity 600 l. Choice of colour according to colour chart.

Dimensions: interior approx. 1800 x 800 x 600 mm,
exterior approx. 2000 x 940 x 900 mm.

tub fittings:

2 handles 1200 mm long, 1 plastic suction shell with sieve, 1 drainage and overflow connection 2 1/2". 1 plastic pump attached to the tub, capacity 200 l/min, 3 phase current 230/400 V, 1,6 kW, IP 44, with 1 motor protection switch. 1 iso transformer 230/24 V TÜV, 1 ON/OFF switch, isolated built-in cocks for pressure control, hot and cold water filling, fittings made of red brass, 1 hand shower with holder, 1 tub inlet 1" made of plastic, 1 precision-manometer, 2 connecting high-pressure hoses 1", installation according to DIN 1988. 1 pressure pipe, 1 set of plastic spray heads 40/60/80/100/120/140 mm².

Tub hygienic according to DIN VDE 0750 with Adisan (ZR0200) cleaning agent and Bayromed (ZR0100) active oxygen.

Integrated, micro-processor controlled electrical element, type GI - WA:

As a serviceable component easy to change

- Control of the currents and tensions via hardware and software.
- Galvanic current which can be superimposed by four different pulsed currents
- Numerical display of the currents and the voltages, separated for galvanic and pulsed current.
- Membrane keyboard for simple operation with easily understandable symbols

3 functional keys ON, OFF and start

16 keys for individually selectable polarity of electrodes (plus, minus, off) with light indicator

1 key for pole commutator

2 keys for galvanic current up and down

2 keys for superposition of pulsed current up and down

2 timer keys, individually adjustable, with automatic switch-off (range 1 - 30 min.)

1 indicator of error message

1 indicator for capacitor charge

9 special steel electrodes type B (patented) material 1.4571, arranged in a sliding way to suit the body, with protective corner profiles made of plastics.

The unit is a compact design, all connections via plug-type connectors.



Supply voltage: 24 V AC
Power consumption: 80 W
Output voltage (galv./pulsed current): 0 - 24 V DC /0 - 7 V AC
Output current (galv./pulsed current): 0 - 2 A DC /0 - 300 mA AC
CE - Sign

Following parts are production line included:

Part-no. SU0010

4 selector keys for the superposition of the following pulsed currents:

Monophase (sinusoidal half-wave) 50 Hz

e.g. for the increase of the muscular tonus, the improvement of the blood circulation and for the treatment of pains

Ultra irritation current rectangle 140 Hz

ratio pulse/pause 2/5

e.g. for the treatment of myalgia, lumbalgia and muscular hypertonia

Rectangular threshold current 50 Hz, with 0,5 Hz sinusoidal superposition

e.g. for the efficient treatment of myalgia, neuralgia, lumbalgia and for electro-gymnastics for muscular contraction and reinforcement.

Rectangular threshold current 50 Hz, with 2 Hz sinusoidal superposition

e.g. for the efficient treatment of strain, contusions and haematomas

Part-no. SU0030

stainless steel electrodes type B (patented) removeable and slidable for contoured treatment. Inclusive suspension.

Part-no. SU0050

Dry run protection for the pump.

Part-no. SU0070

Filling unit with tub inlet 1 1/4" and filling valves for warm- and coldwater each 1".

Optimal extras: see overview sheet 08.01.01 and 08.01.02
Special fittings and accessories

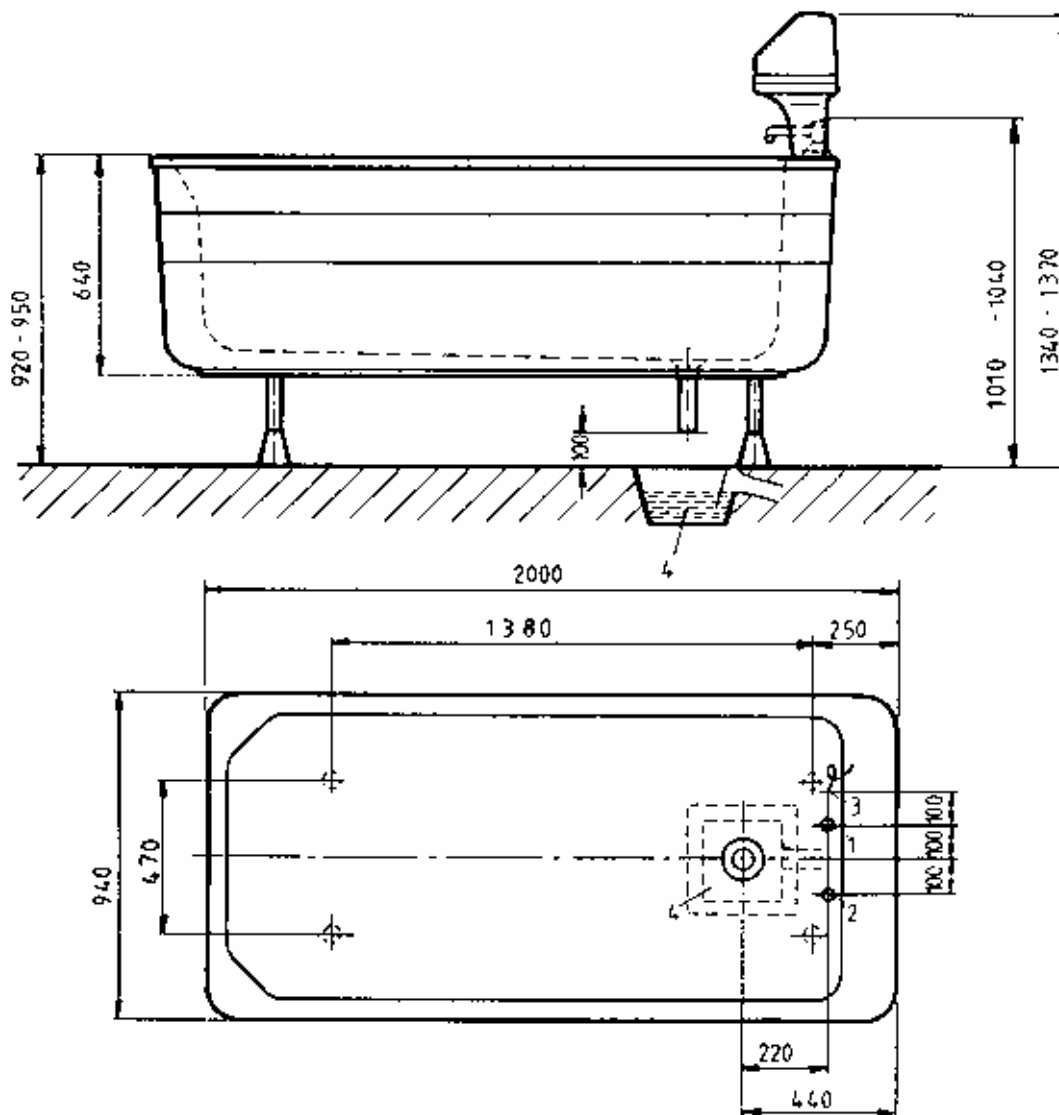
Technical details subject to change

Trautwein GmbH, 79312 Emmendingen

Tel.: 07641/4677-30 Fax: 07641/4677-70

Internet: <http://www.trautwein-gmbh.com>

08.01.05



Combinationappliance
model Boppard
type UW GI 1800 AC
part-no. AU1145

On-site connections

1. cold water sleeve 1", flush with floor
2. warm water sleeve 1", flush with floor
3. elektr.-floor connection, 1,5m long, 3 phase current, 400 V/3/N/SL 1,5 mm², motor 1,6 kW, 4,2 A
4. Drainage with odour trap \varnothing 100. 40 mm sunk, capacity 3,5 l/sec. In case of flush or raised installation, the flow-off capacity must be throttled down to 2 l/sec. Free outlet min. 10 cm.

On site safety measures:

Stop cock cold and warm water. All-pole circuit breaker within the room. Protection switch, nominal fault current max. 30 mA, UB=24V. Within reach of the tub (2,50 m above, 1,25 m to the side) no parts, appliances, etc. conducting or connected to earth potential.

German safety regulations. Electric installation according to DIN IEC/VDE

If the tub was equipped with the emergency calling device, must a 2-wire cable installed.

Minimum door width for installation: 79 cm.

Weight: 180 Kg

Technical details subject to change

Combinationappliance
model Boppard
type UW GI 2000 AC
part-no. AU1155

for the application of underwater jet massages and electrogalvanic baths with the possibility to superimpose 4 different pulsed currents as well as for standard electrogalvanic baths, consequently being suitable for all applications in the electro-galvanical-bath, consisting of:

Acrylic glass tub body, seamlessly deformed, glass-fibre reinforced, on 4 adjustable feet with rubber protecting cap. Polystyrene cladding. Capacity 800 l. Choice of colour according to colour chart.

Dimensions: interior approx. 2000 x 900 x 600 mm,
exterior approx. 2320 x 1060 x 900 mm.

tub fittings:

2 handles 1200 mm long, 1 plastic suction shell with sieve, 1 drainage and overflow connection 2 1/2". 1 plastic pump attached to the tub, capacity 200 l/min, 3 phase current 230/400 V, 1,6 kW, IP 44, with 1 motor protection switch. 1 iso transformer 230/24 V TÜV, 1 ON/OFF switch, isolated built-in cocks for pressure control, hot and cold water filling, fittings made of red brass, 1 hand shower with holder, 1 tub inlet 1" made of plastic, 1 precision-manometer, 2 connecting high-pressure hoses 1", installation according to DIN 1988. 1 pressure pipe, 1 set of plastic spray heads 40/60/80/100/120/140 mm².

Tub hygienic according to DIN VDE 0750 (IEC 601-1) and MPBetreibV with Adisan (ZR0200) cleaning agent and Bayromed (ZR0100) active oxygen.

Integrated, micro-processor controlled electrical element, type GI - WA:

As a serviceable component easy to change

- Control of the currents and tensions via hardware and software.
- Galvanic current which can be superimposed by four different pulsed currents
- Numerical display of the currents and the voltages, separated for galvanic and pulsed current.
- Membrane keyboard for simple operation with easily understandable symbols

3 functional keys ON, OFF and start

16 keys for individually selectable polarity of electrodes (plus, minus, off) with light indicator

1 key for pole commutator

2 keys for galvanic current up and down

2 keys for superposition of pulsed current up and down

2 timer keys, individually adjustable, with automatic switch-off (range 1 - 30 min.)

1 indicator of error message

1 indicator for capacitor charge

9 special steel electrodes type B (patented) material 1.4571, arranged in a sliding way to suit the body, with protective corner profiles made of plastics.

The unit is a compact design, all connections via plug-type connectors.

Supply voltage: 24 V AC

Power consumption: 80 W

Output voltage (galv./pulsed current): 0 - 24 V DC / 0 - 7 V AC

Output current (galv./pulsed current): 0 - 2 A DC / 0 - 300 mA AC

CE - Sign



1

Following parts are production line included:

Part-no. SU0010

4 selector keys for the superposition of the following pulsed currents:

Monophase (sinusoidal half-wave) 50 Hz

e.g. for the increase of the muscular tonus, the improvement of the blood circulation and for the treatment of pains

Ultra irritation current rectangle 140 Hz

ratio pulse/pause 2/5

e.g. for the treatment of myalgia, lumbalgia and muscular hypertonia

Rectangular threshold current 50 Hz, with 0,5 Hz

sinusoidal superposition

e.g. for the efficient treatment of myalgia, neuralgia, lumbalgia and for electro-gymnastics for muscular contraction and reinforcement.

Rectangular threshold current 50 Hz, with 2 Hz

sinusoidal superposition

e.g. for the efficient treatment of strain, contusions and haematomas

Part-no. SU0030

stainless steel electrodes type B (patented) removeable and slidable for contoured treatment. Inclusive suspension.

Part-no. SU0050

Dry run protection for the pump.

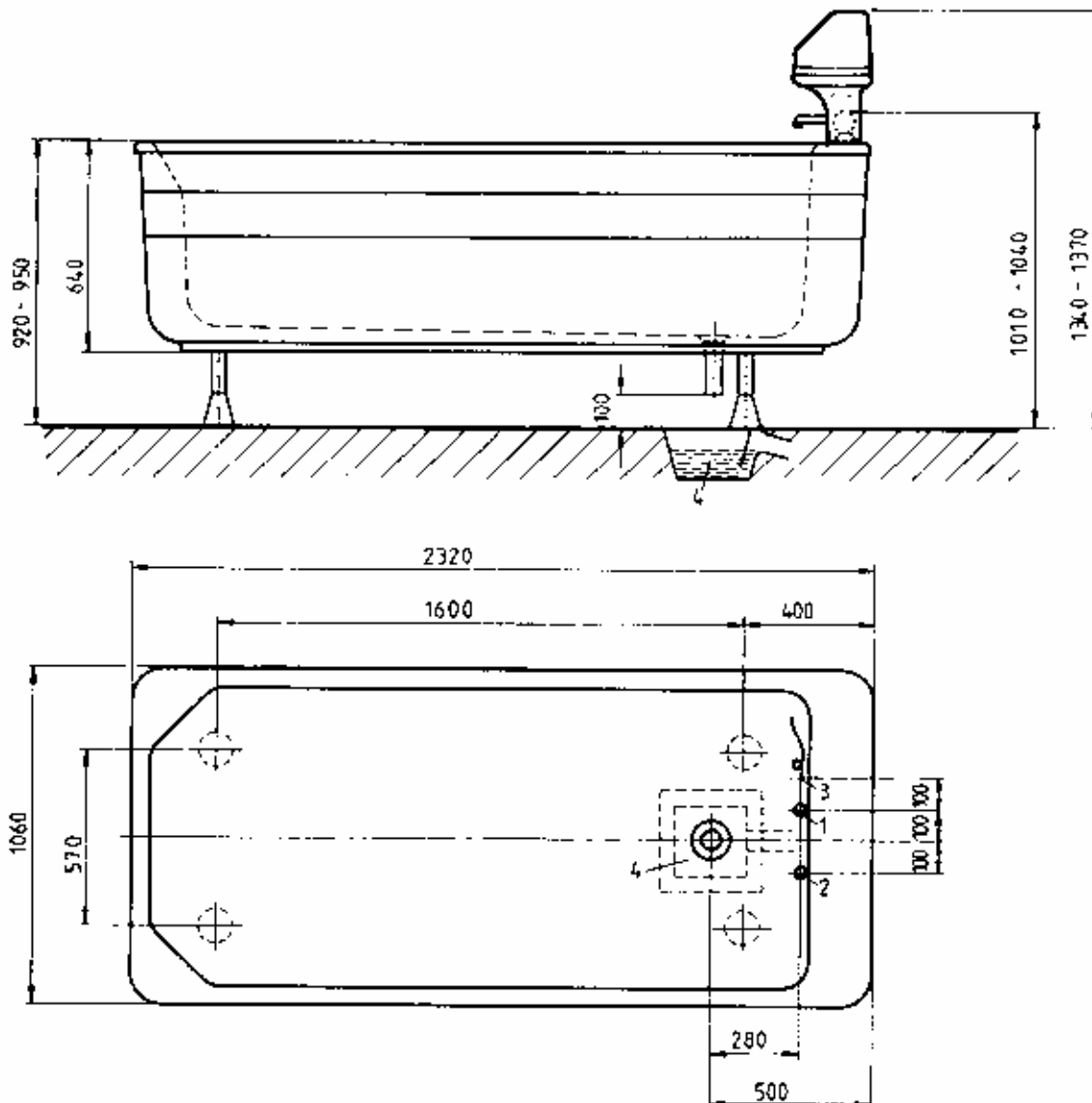
Part-no. SU0070

Filling unit with tub inlet 1 1/4" and filling valves for warm- and coldwater each 1".

Optimal extras: see overview sheet 08.01.01 and 08.01.02

Special fittings and accessories

Technical details subject to change



Combinationappliance
model Boppard
type UW GI 2000 AC
part-no. AU1155

On-site connections

1. cold water sleeve 1", flush with floor
2. warm water sleeve 1", flush with floor
3. elektr.-floor connection, 1,5m long, 3 phase current, 400 V/3/N/SL 1,5 mm², motor 1,6 kW, 4,2 A
4. Drainage with odour trap Ø 100. 40 mm sunk, capacity 3,5 l/sec. In case of flush or raised installation, the flow-off capacity must be throttled down to 2 l/sec. Free outlet min. 10 cm.

On site safety measures:

Stop cock cold and warm water. All-pole circuit breaker within the room. Protection switch, nominal fault current max. 30 mA, UB=24V. Within reach of the tub (2,50 m above, 1,25 m to the side) no parts, appliances, etc. conducting or connected to earth potential.

German safety regulations. Electric installation according to DIN IEC/VDE

If the tub was equipped with the emergency calling device, must a 2-wire cable installed.

Minimum door width for installation: 79 cm.

Weight: 200 Kg

Technical details subject to change

Combinationappliance
model Freiburg
type UW GI 2000 AC
part-no. AU 1175

for the application of underwater jet massages and electrogalvanic baths with the possibility to superimpose 4 different pulsed currents as well as for standard electrogalvanic baths, consequently being suitable for all applications in the electro-galvanical-bath, consisting of:

Acrylic glass tub body, seamlessly deformed, glass-fibre reinforced, on 4 adjustable feet with rubber protecting cap. Polystyrene cladding. Capacity 800 l. Choice of colour according to colour chart.

Dimensions: interior approx. 2000 x 900 x 600 mm,
exterior approx. 2600 x 1060 x 900 mm.

tub fittings:

2 handles 1200 mm long, 1 plastic suction shell with sieve, 1 drainage and overflow connection 2 1/2". 1 plastic pump attached to the tub, capacity 200 l/min, 3 phase current 230/400 V, 1,6 kW, IP 44, with 1 motor protection switch. 1 iso transformer 230/24 V TÜV, 1 ON/OFF switch, isolated built-in cocks for pressure control, hot and cold water filling, fittings made of red brass, 1 hand shower with holder, 1 tub inlet 1" made of plastic, 1 precision-manometer, 2 connecting high-pressure hoses 1", installation according to DIN 1988. 1 pressure pipe, 1 set of plastic spray heads 40/60/80/100/120/140 mm².

Tub hygienic according to DIN VDE 0750 (IEC 601-1) and MPBetreibV with Adisan (ZR0200) cleaning agent and Bayromed (ZR0100) active oxygen.

Integrated, micro-processor controlled electrical element, type GI - WA:

As a serviceable component easy to change

- Control of the currents and tensions via hardware and software.
- Galvanic current which can be superimposed by four different pulsed currents
- Numerical display of the currents and the voltages, separated for galvanic and pulsed current.
- Membrane keyboard for simple operation with easily understandable symbols

3 functional keys ON, OFF and start

16 keys for individually selectable polarity of electrodes (plus, minus, off) with light indicator

1 key for pole commutator

2 keys for galvanic current up and down

2 keys for superposition of pulsed current up and down

2 timer keys, individually adjustable, with automatic switch-off (range 1 - 30 min.)

1 indicator of error message

1 indicator for capacitor charge

9 special steel electrodes type B (patented) material 1.4571, arranged in a sliding way to suit the body, with protective corner profiles made of plastics.

The unit is a compact design, all connections via plug-type connectors.

Supply voltage: 24 V AC

Power consumption: 80 W

Output voltage (galv./pulsed current): 0 - 24 V DC / 0 - 7 V AC

Output current (galv./pulsed current): 0 - 2 A DC / 0 - 300 mA AC

CE - Sign



Following parts are production line included:

Part-no. SU0010

4 selector keys for the superposition of the following pulsed currents:

Monophase (sinusoidal half-wave) 50 Hz

e.g. for the increase of the muscular tonus, the improvement of the blood circulation and for the treatment of pains

Ultra irritation current rectangle 140 Hz

ratio pulse/pause 2/5

e.g. for the treatment of myalgia, lumbalgia and muscular hypertonia

Rectangular threshold current 50 Hz, with 0,5 Hz sinusoidal superposition

e.g. for the efficient treatment of myalgia, neuralgia, lumbalgia and for electro-gymnastics for muscular contraction and reinforcement.

Rectangular threshold current 50 Hz, with 2 Hz sinusoidal superposition

e.g. for the efficient treatment of strain, contusions and haematomas

Part-no. SU0030

stainless steel electrodes type B (patented) removeable and slipable for contoured treatment. Inclusive suspension.

Part-no. SU0050

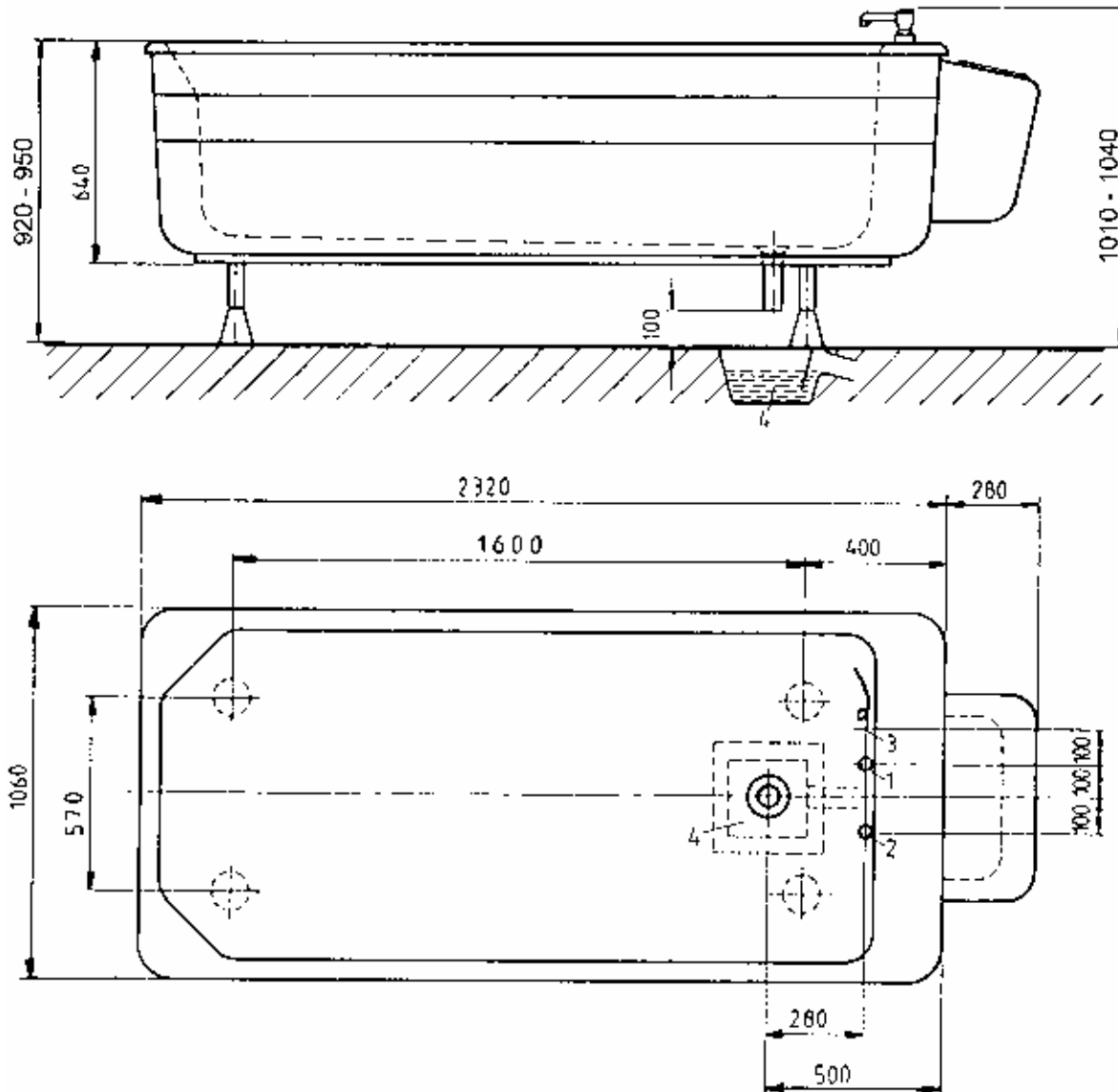
Dry run protection for the pump.

Part-no. SU0070

Filling unit with tub inlet 1 1/4" and filling valves for warm- and coldwater each 1".

Optimal extras: see overview sheet 08.01.01 and 08.01.02
Special fittings and accessories

Technical details subject to change



Combinationappliance
model Freiburg
type UW GI 2000 AC
part-no. AU1175

On-site connections

1. cold water sleeve 1", flush with floor
2. warm water sleeve 1", flush with floor
3. elektr.-floor connection, 1,5m long, 3 phase current, 400 V/3/N/SL 1,5 mm², motor 1,6 kW, 4,2 A
4. Drainage with odour trap \varnothing 100. 40 mm sunk, capacity 3,5 l/sec. In case of flush or raised installation, the flow-off capacity must be throttled down to 2 l/sec. Free outlet min. 10 cm.

On site safety measures:

Stop cock cold and warm water. All-pole circuit breaker within the room. Protection switch, nominal fault current max. 30 mA, UB=24V. Within reach of the tub (2,50 m above, 1,25 m to the side) no parts, appliances, etc. conducting or connected to earth potential. German safety regulations. Electric installation according to DIN IEC/VDE. If the tub was equipped with the emergency calling device, must a 2-wire cable installed.

Minimum door width for installation: 79 cm.

Weight: 200 Kg

Technical details subject to change

Underwatermassageappliance
model Boppard,
type UW 1800 AC
part-no. AU1120

1



for the application of underwater jet massages, consisting of:

Acrylic glass tub body, seamlessly deformed, glass-fibre reinforced, on 4 adjustable feet with rubber protecting cap. Polystyrene cladding. Capacity 600 l. Choice of colour according to colour chart.

Dimensions: interior approx. 1800 x 800 x 600 mm,
exterior approx. 2000 x 940 x 900 mm.

tub fittings:

2 handles 1200 mm long, 1 plastic suction shell with sieve, 1 drainage and overflow connection 2 1/2". 1 plastic pump attached to the tub, capacity 200 l/min, 3 phase current 230/400 V, 1,6 kW, IP 44, with 1 motor protection switch. 1 iso transformer 230/24 V TÜV, 1 ON/OFF switch, isolated built-in cocks for pressure control, hot and cold water filling, fittings made of red brass, 1 hand shower with holder, 1 tub inlet 1" made of plastic, 1 precision-manometer, 2 connecting high-pressure hoses 1", installation according to DIN 1988. 1 pressure pipe, 1 set of plastic spray heads 40/60/80/100/120/140 mm².

CE - Sign

Following parts are production line included:

Part-no. SU0050

Dry run protection for the pump.

Part-no. SU0070

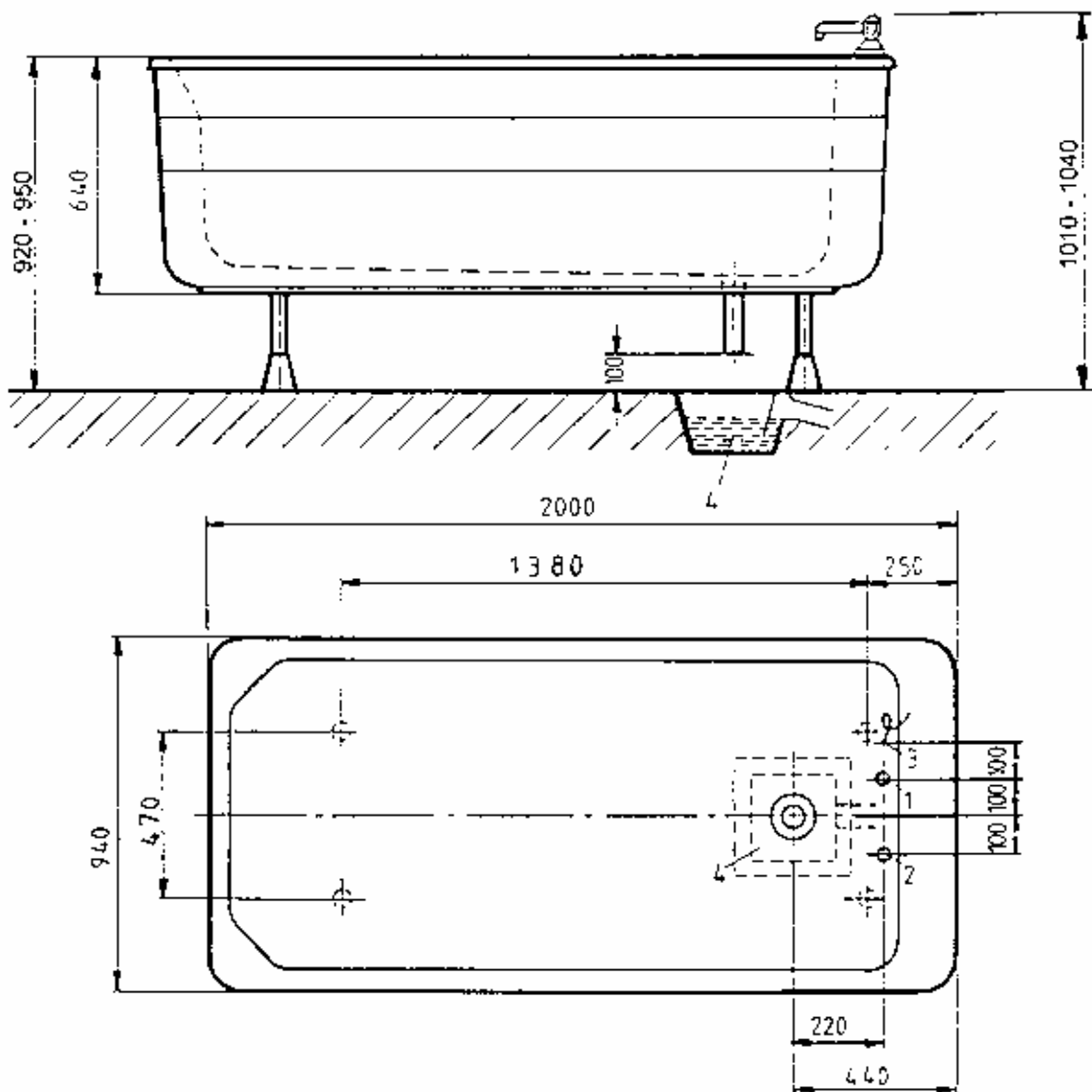
Filling unit with tub inlet 1 1/4" and filling valves for warm- and coldwater each 1".

Optinal extras: see overview sheet 08.01.01 and 08.01.02

Special fittings and accessories

Tub hygienic according to DIN VDE 0750 (IEC 601-1) and MPBetreibV with Adisan (ZR0200) cleaning agent and Bayromed (ZR0100) active oxygen.

Technical details subject to change



Underwatermassageappliance
model Boppard,
type UW 1800 AC
part-no. AU1120

On-site connections

1. cold water sleeve 1", flush with floor
2. warm water sleeve 1", flush with floor
3. elektr.-floor connection, 1,5m long, 3 phase current, 400 V/3/N/SL 1,5 mm², motor 1,6 kW, 4,2 A
4. Drainage with odour trap \varnothing 100
40 mm sunk, capacity 3,5 l/sec.
In case of flush or raised installation, the flow-off capacity must be throttled down to 2 l/sec.

On site safety measures:

Stop cock cold and warm water. All-pole circuit breaker within the room. Protection switch, nominal fault current max. 30 mA, UB=24V.
German safety regulations. Electric installation according to DIN IEC/VDE
If the tub was equipped with the emergency calling device, must a 2-wire cable installed.

Minimum door width for installation: 79 cm.
Weight: 170 KG

Technical details subject to change

Underwatermassageappliance
model Wörishofen,
type UW 1800 AC
part-no. AU1040

1

for the application of underwater jet massages, consisting of:

Acrylic glass tub body, seamlessly deformed, glass-fibre reinforced, on 4 adjustable feet with rubber protecting cap. Polystyrene cladding. Capacity 600 l. Choice of colour according to colour chart.

Dimensions: interior approx. 1800 x 800 x 600 mm,
exterior approx. 2320 x 940 x 900 mm.

tub fittings:

2 handles 1200 mm long, 1 plastic suction shell with sieve, 1 drainage and overflow connection 2 1/2". 1 plastic pump attached to the tub, capacity 200 l/min, 3 phase current 230/400 V, 1,6 kW, IP 44, with 1 motor protection switch. 1 iso transformer 230/24 V TÜV, 1 ON/OFF switch, isolated built-in cocks for pressure control, hot and cold water filling, fittings made of red brass, 1 hand shower with holder, 1 tub inlet 1 1/4" made of plastic, 1 precision-manometer, 2 connecting high-pressure hoses 1", installation according to DIN 1988. 1 pressure pipe, 1 set of plastic spray heads 40/60/80/100/120/140 mm².

CE - Sign

Following parts are production line included:

Part-no. SU0050

Dry run protection for the pump.

Part-no. SU0070

Filling unit with tub inlet 1 1/4" and filling valves for warm- and coldwater each 1".

Optinal extras: see overview sheet 08.01.01 and 08.01.02

Special fittings and accessories

Tub hygienic according to DIN VDE 0750 (IEC 601-1) and MPBetreibV with Adisan (ZR0200) cleaning agent and Bayromed (ZR0100) active oxygen.



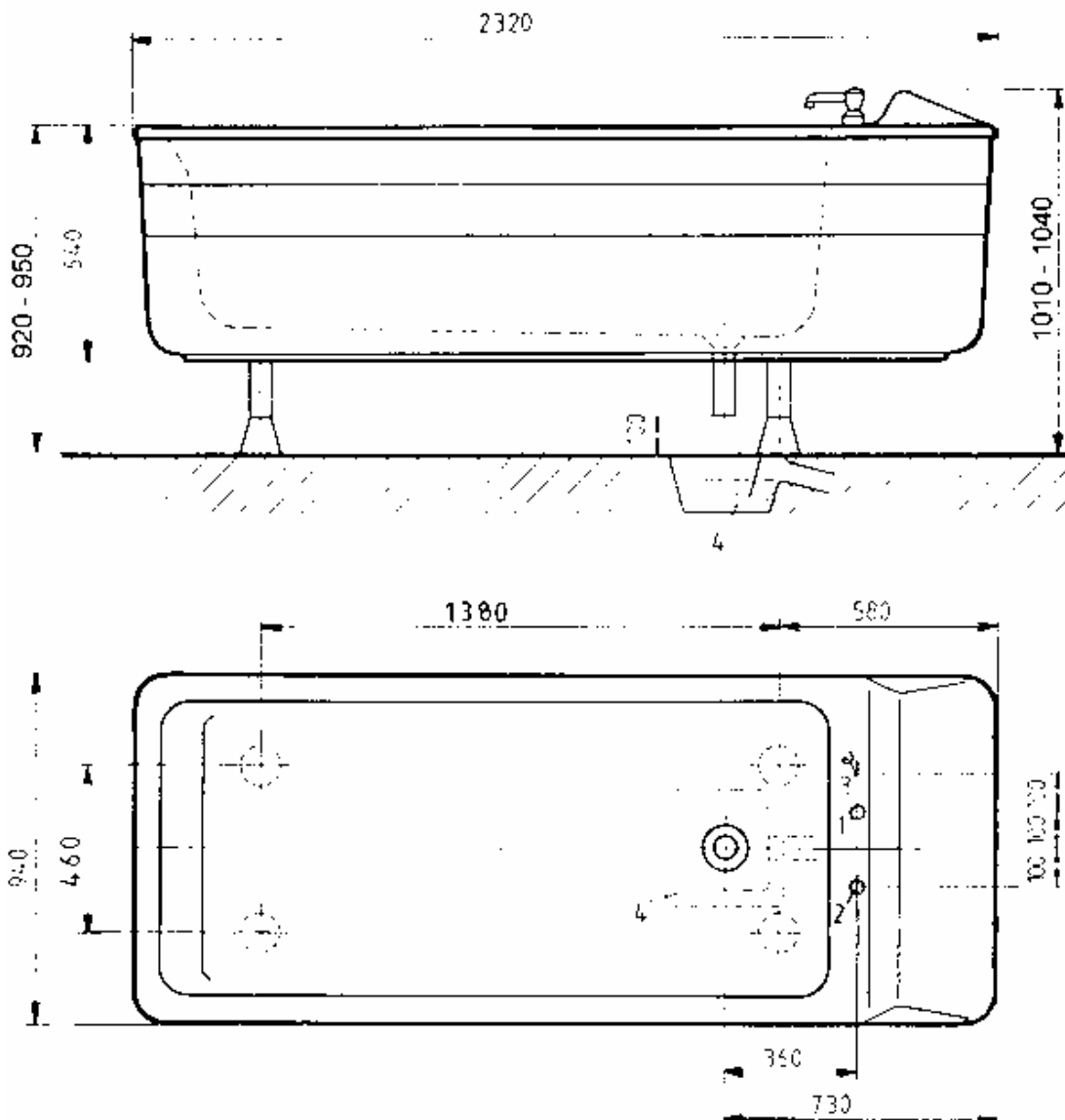
Technical details subject to change

Trautwein GmbH, 79312 Emmendingen

Tel.: 07641/4677-30 Fax: 07641/4677-70

Internet: <http://www.trautwein-gmbh.com>

08.01.09



Underwatermassageappliance
model Wörishofen,
type UW 1800 AC
part-no. AU1040

On-site connections

1. cold water sleeve 1", flush with floor
2. warm water sleeve 1", flush with floor
3. elektr.-floor connection, 1,5m long, 3 phase current, 400 V/3/N/SL 1,5 mm², motor 1,6 kW, 4,2 A
4. Drainage with odour trap \varnothing 100 40 mm sunk, capacity 3,5 l/sec.
In case of flush or raised installation, the flow-off capacity must be throttled down to 2 l/sec.

On site safety measures:

Stop cock cold and warm water. All-pole circuit breaker within the room. Protection switch, nominal fault current max. 30 mA, UB=24V.
German safety regulations. Electric installation according to DIN IEC/VDE
If the tub was equipped with the emergency calling device, must a 2-wire cable installed.

Minimum door width for installation: 79 cm.
Weight: 180 Kg

Technical details subject to change

Underwatermassageappliance
model Boppard,
type UW 2000 AC
part-no. AU1130

1

for the application of underwater jet massages, consisting of:

Acrylic glass tub body, seamlessly deformed, glass-fibre reinforced, on 4 adjustable feet with rubber protecting cap. Polystyrene cladding. Capacity 800 l. Choice of colour according to colour chart.

Dimensions: interior approx. 2000 x 900 x 600 mm,
exterior approx. 2320 x 1060 x 900 mm.

tub fittings:

2 handles 1200 mm long, 1 plastic suction shell with sieve, 1 drainage and overflow connection 2 1/2". 1 plastic pump attached to the tub, capacity 200 l/min, 3 phase current 230/400 V, 1,6 kW, IP 44, with 1 motor protection switch. 1 iso transformer 230/24 V TÜV, 1 ON/OFF switch, isolated built-in cocks for pressure control, hot and cold water filling, fittings made of red brass, 1 hand shower with holder, 1 tub inlet 1" made of plastic, 1 precision-manometer, 2 connecting high-pressure hoses 1", installation according to DIN 1988. 1 pressure pipe, 1 set of plastic spray heads 40/60/80/100/120/140 mm².

CE - Sign

Following parts are production line included:

Part-no. SU0050

Dry run protection for the pump.

Part-no. SU0070

Filling unit with tub inlet 1 1/4" and filling valves for warm- and coldwater each 1".

Optinal extras: see overview sheet 08.01.01 and 08.01.02

Special fittings and accessories.

Tub hygienic according to DIN VDE 0750 (IEC 601-1) and MPBetreibV with Adisan (ZR0200) cleaning agent and Bayromed (ZR0100) active oxygen.



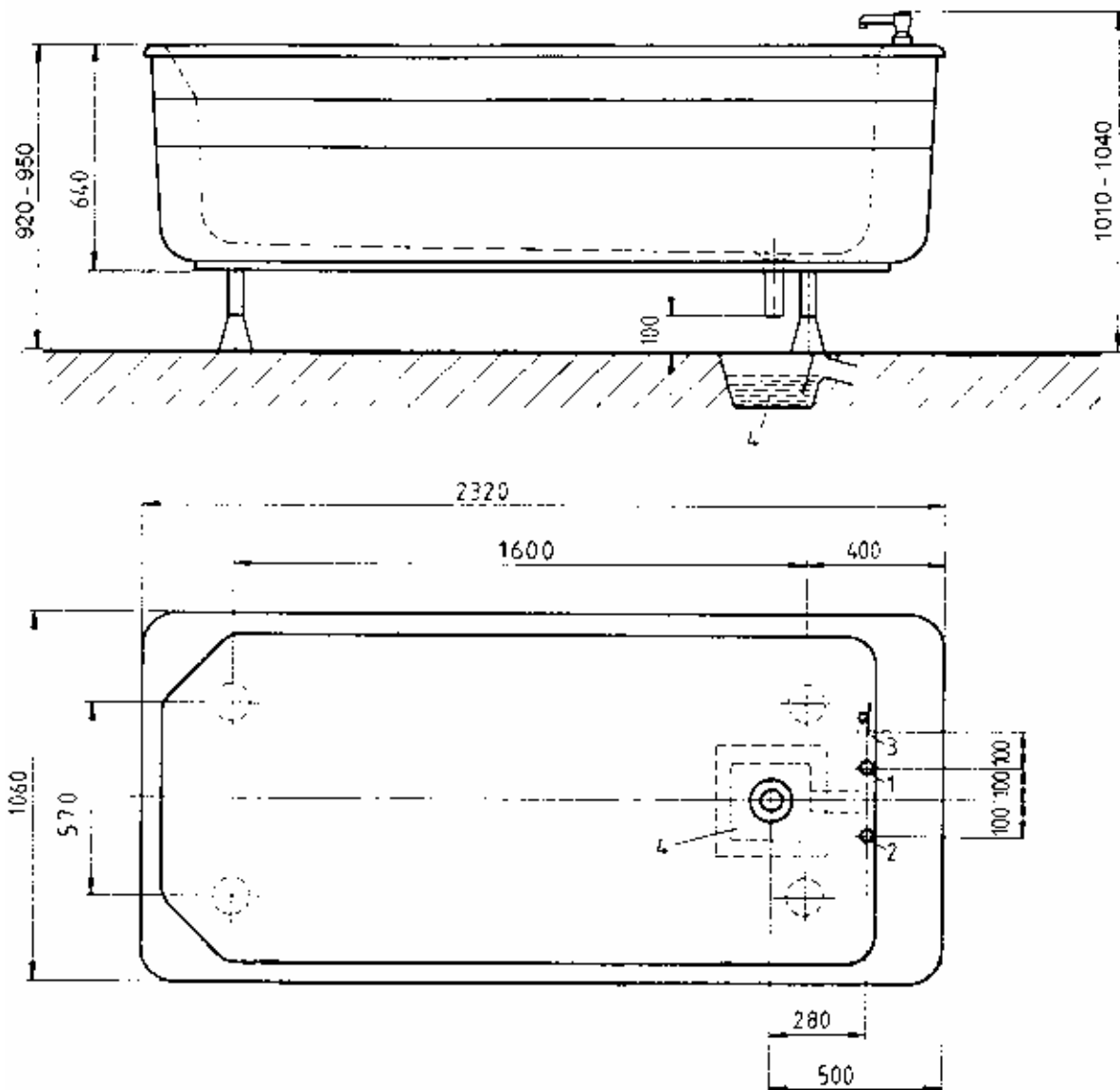
Technical details subject to change

Trautwein GmbH, 79312 Emmendingen

Tel.: 07641/4677-30 Fax: 07641/4677-70

Internet: <http://www.trautwein-gmbh.com>

08.01.10



Underwatermassageappliance
model Boppard,
type UW 2000 AC
part-no. AU1130

On-site connections

1. cold water sleeve 1", flush with floor
2. warm water sleeve 1", flush with floor
3. elektr.-floor connection, 1,5m long, 3 phase current, 400 V/3/N/SL 1,5 mm², motor 1,6 kW, 4,2 A
4. Drainage with odour trap Ø 100 40 mm sunk, capacity 3,5 l/sec.
In case of flush or raised installation, the flow-off capacity must be throttled down to 2 l/sec.

On site safety measures:

Stop cock cold and warm water. All-pole circuit breaker within the room. Protection switch, nominal fault current max. 30 mA, UB=24V.
German safety regulations. Electric installation according to DIN IEC/VDE
If the tub was equipped with the emergency calling device, must a 2-wire cable installed.

Minimum door width for installation: 79 cm.
Weight: 200 Kg

Technical details subject to change

Combinationappliance model Wörishofen, type UW GI CO₂ 1800 AC part-no. AU1090

for the application of underwater jet massages, CO₂ dry-gas baths and electrogalvanic baths with the possibility to superimpose 4 different pulsed currents as well as for standard electrogalvanic baths, consequently being suitable for all applications in the electrogalvanical-bath, consisting of:

Acrylic glass tub body, seamlessly deformed, glass-fibre reinforced, on 4 adjustable feet with rubber protecting cap. Polystyrene cladding. Capacity 600 l. Choice of colour according to colour chart.

Dimensions: interior approx. 1800 x 800 x 600 mm,
exterior approx. 2320 x 940 x 900 mm.

tub fittings:

2 handles 1200 mm long, 1 plastic suction shell with sieve, 1 drainage and overflow connection 2 1/2". 1 plastic pump attached to the tub, capacity 200 l/min, 3 phase current 230/400 V, 1,6 kW, IP 44, with 1 motor protection switch. 1 iso transformer 230/24 V TÜV, 1 ON/OFF switch, isolated built-in cocks for pressure control, hot and cold water filling, fittings made of red brass, 1 hand shower with holder, 1 tub inlet 1" made of plastic, 1 precision-manometer, 2 connecting high-pressure hoses 1", installation according to DIN 1988. 1 pressure pipe, 1 set of plastic spray heads 40/60/80/100/120/140 mm².

Tub hygienic according to DIN VDE 0750 (IEC 601-1) and MPBetriebV with Adisan (ZR0200) cleaning agent and Bayromed (ZR0100) active oxygen.

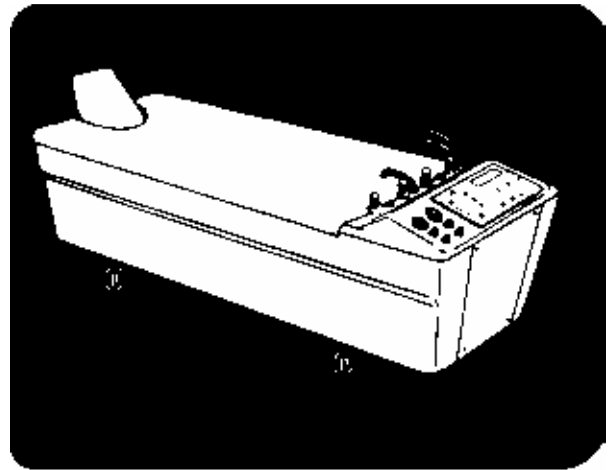
Integrated, micro-processor controlled electrical element, type GI - WA:

As a serviceable component easy to change

- Control of the currents and tensions via hardware and software.
 - Galvanic current which can be superimposed by four different pulsed currents
 - Numerical display of the currents and the voltages, separated for galvanic and pulsed current.
 - Membrane keyboard for simple operation with easily understandable symbols
- 3 functional keys ON, OFF and start
16 keys for individually selectable polarity of electrodes (plus, minus, off) with light indicator
1 key for pole commutator
2 keys for galvanic current up and down
2 keys for superposition of pulsed current up and down
2 timer keys, individually adjustable, with automatic switch-off (range 1 - 30 min.)
1 indicator of error message
1 indicator for capacitor charge
9 special steel electrodes type B (patented) material 1.4571, arranged in a sliding way to suit the body, with protective corner profiles made of plastics.

The unit is a compact design, all connections via plug-type connectors.

Supply voltage: 24 V AC
Power consumption: 80 W
Output voltage (galv./pulsed current): 0 - 24 V DC / 0 - 7 V AC
Output current (galv./pulsed current): 0 - 2 A DC / 0 - 300 mA AC
CE - Sign



1

Integrated CO₂-dry gas bath component:

Operating elements: 1 on/off switch with lamp 24 V, 1 adjustable thermostat with lamp, 1 timer 15 min. for filling the bath with CO₂ gas, 1 built-in manometer for CO₂, 1 steam impulse switch, 1 timer 15 min. for sucking off the CO₂ gas.

Built-in aggregate: 1 combination aggregate for warm air and steam, thermostatically adjusted. 2 fans for warm air circulation and sucking off the CO₂-gas. 1 filling shell combination for CO₂ and warm air, 1 warm air thermostat. Copper piping. 1 CO₂ mixing - regulating cock. 1 tub covering with neck opening, 1 couch in body shape with support.

Following parts are production line included:

Part-no. SU0010

4 selector keys for the superposition of the following pulsed currents:

Monophase (sinusoidal half-wave) 50 Hz

e.g. for the increase of the muscular tonus, the improvement of the blood circulation and for the treatment of pains

Ultra irritation current rectangle 140 Hz

ratio pulse/pause 2/5

e.g. for the treatment of myalgia, lumbalgia and muscular hypertonia

Rectangular threshold current 50 Hz, with 0,5 Hz

sinusoidal superposition

e.g. for the efficient treatment of myalgia, neuralgia, lumbalgia and for electro-gymnastics for muscular contraction and reinforcement.

Rectangular threshold current 50 Hz, with 2 Hz

sinusoidal superposition

e.g. for the efficient treatment of strain, contusions and haematomas

Part-no. SU0030

stainless steel electrodes type B (patented) removeable and sutable for contoured treatment. Inclusive suspension.

Part-no. SU0050

Dry run protection for the pump.

Part-no. SU0070

Filling unit with tub inlet 1 1/4" and filling valves for warm- and coldwater each 1".

Optinal extras: see overview sheet 08.01.01 and 08.01.02

Special fittings and accessories

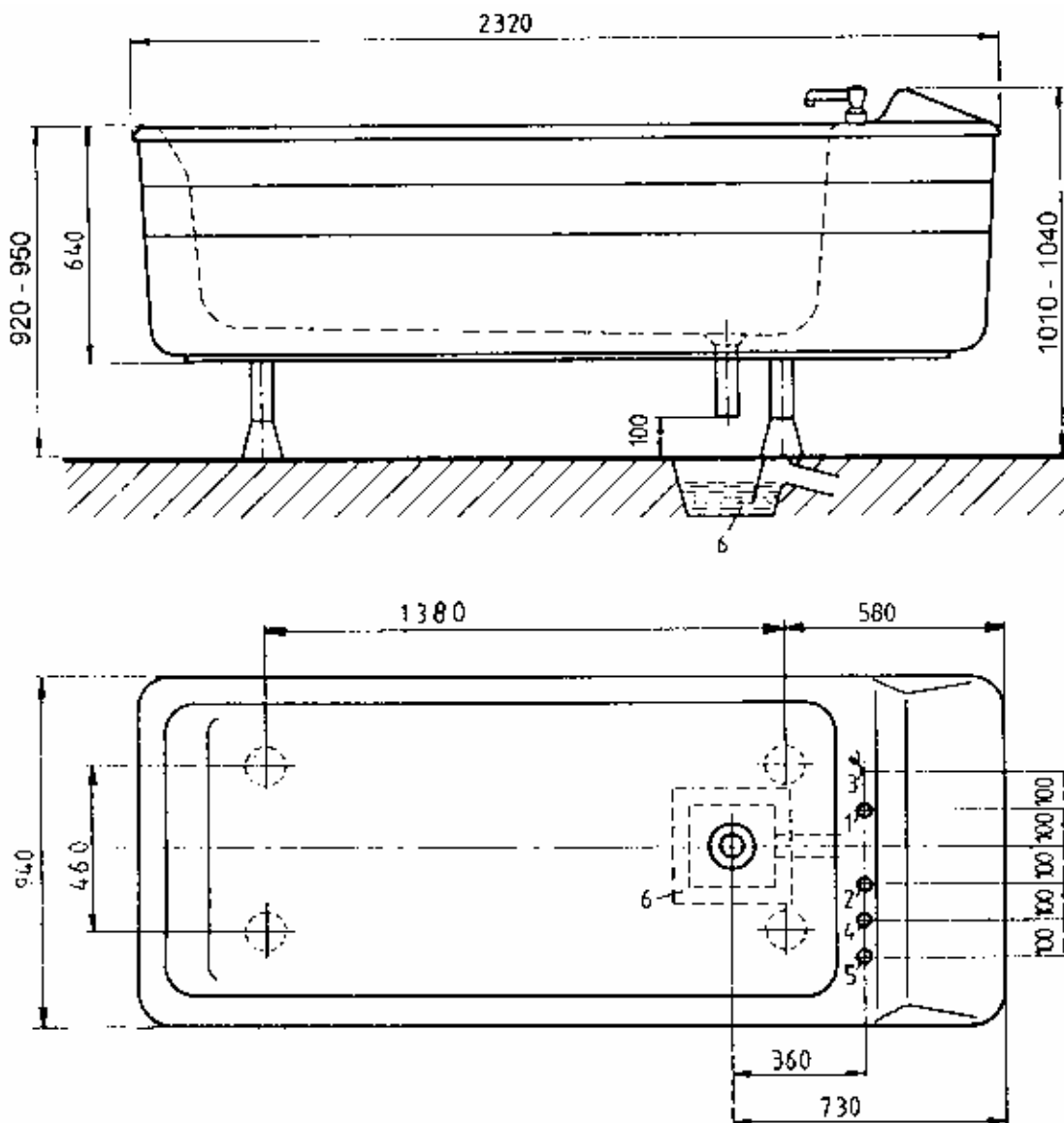
Technical details subject to change

Trautwein GmbH, 79312 Emmendingen

Tel.: 07641/4677-30 Fax: 07641/4677-70

Internet: <http://www.trautwein-gmbh.com>

08.01.11



Combinationappliance
model Wörishofen,
type UW GI CO₂ 1800 AC
part-no. AU1090

In case of flush or raised installation, the flow-off capacity must be throttled down to 2 l/sec. Free outlet min. 10 cm.

On-site connections

1. cold water sleeve 1", flush with floor
2. warm water sleeve 1", flush with floor
3. elektr.-floor connection, 1,5m long, 3 phase current, 400 V/3/N/SL 1,5 mm², motor 1,6 kW, 4,2 A
4. CO₂ suction-off pipe, to the outside on the shortest possible way, sleeve 1", flush with floor
5. CO₂ copper pipe 10 x 1, protruding approx. 10 cm above floor level.
6. Drainage with odour trap Ø 100. 40 mm sunk, capacity 3,5 l/sec.

On site safety measures:

Stop cock cold and warm water All-pole circuit breaker within the room. Protection switch, nominal fault current max. 30 mA, UB=24V.

Within reach of the tub (2,50 m above, 1,25 m to the side) no parts, appliances, etc. conducting or connected to earth potential.

German safety regulations. Electric installation according to DIN IEC/VDE

If the tub was equipped with the emergency calling device, must a 2-wire cable installed.

Minimum door width for installation: 79 cm.

Weight: 200 Kg

Technical details subject to change

Combinationappliance model Freiburg type UW GI CO₂ 2000 AC part-no. AU1185

for the application of underwater jet massages, CO₂ dry-gas baths and electrogalvanic baths with the possibility to superimpose 4 different pulsed currents as well as for standard electrogalvanic baths, consequently being suitable for all applications in the electrogalvanic-bath, consisting of:

Acrylic glass tub body, seamlessly deformed, glass-fibre reinforced, on 4 adjustable feet with rubber protecting cap. Polystyrene cladding. Capacity 800 l. Choice of colour according to colour chart.

Dimensions: interior approx. 2000 x 900 x 600 mm,
exterior approx. 2600 x 1060 x 900 mm.

tub fittings:

2 handles 1200 mm long, 1 plastic suction shell with sieve, 1 drainage and overflow connection 2 1/2". 1 plastic pump attached to the tub, capacity 200 l/min, 3 phase current 230/400 V, 1,6 kW, IP 44, with 1 motor protection switch. 1 iso transformer 230/24 V TÜV, 1 ON/OFF switch, isolated built-in cocks for pressure control, hot and cold water filling, fittings made of red brass, 1 hand shower with holder, 1 tub inlet 1" made of plastic, 1 precision-manometer, 2 connecting high-pressure hoses 1", installation according to DIN 1988. 1 pressure pipe, 1 set of plastic spray heads 40/60/80/100/120/140 mm².

Tub hygienic according to DIN VDE 0750 (IEC 601-1) and MPBetriebV with Adisan (ZR0200) cleaning agent and Bayromed (ZR0100) active oxygen.

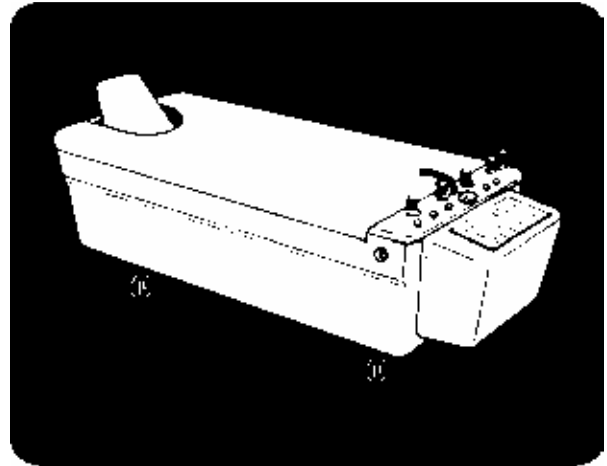
Integrated, micro-processor controlled electrical element, type GI - WA:

As a serviceable component easy to change

- Control of the currents and tensions via hardware and software.
 - Galvanic current which can be superimposed by four different pulsed currents
 - Numerical display of the currents and the voltages, separated for galvanic and pulsed current.
 - Membrane keyboard for simple operation with easily understandable symbols
- 3 functional keys ON, OFF and start
16 keys for individually selectable polarity of electrodes (plus, minus, off) with light indicator
1 key for pole commutator
2 keys for galvanic current up and down
2 keys for superposition of pulsed current up and down
2 timer keys, individually adjustable, with automatic switch-off (range 1 - 30 min.)
1 indicator of error message
1 indicator for capacitor charge
9 special steel electrodes type B (patented) material 1.4571, arranged in a sliding way to suit the body, with protective corner profiles made of plastics.

The unit is a compact design, all connections via plug-type connectors.

Supply voltage: 24 V AC
Power consumption: 80 W
Output voltage (galv./pulsed current): 0 - 24 V DC / 0 - 7 V AC
Output current (galv./pulsed current): 0 - 2 A DC / 0 - 300 mA AC
CE - Sign



Integrated CO₂-dry gas bath component:

Operating elements: 1 on/off switch with lamp 24 V, 1 adjustable thermostat with lamp, 1 timer 15 min. for filling the bath with CO₂ gas, 1 built-in manometer for CO₂, 1 steam impulse switch, 1 timer 15 min. for sucking off the CO₂ gas.

Built-in aggregate: 1 combination aggregate for warm air and steam, thermostatically adjusted. 2 fans for warm air circulation and sucking off the CO₂-gas. 1 filling shell combination for CO₂ and warm air, 1 warm air thermostat. Copper piping. 1 CO₂ mixing - regulating cock. 1 tub covering with neck opening, 1 couch in body shape with support.

Following parts are production line included:

Part-no. SU0010

4 selector keys for the superposition of the following pulsed currents:

Monophase (sinusoidal half-wave) 50 Hz

e.g. for the increase of the muscular tonus, the improvement of the blood circulation and for the treatment of pains

Ultra irritation current rectangle 140 Hz

ratio pulse/pause 2/5

e.g. for the treatment of myalgia, lumbalgia and muscular hypertonia

Rectangular threshold current 50 Hz, with 0,5 Hz sinusoidal superposition

e.g. for the efficient treatment of myalgia, neuralgia, lumbalgia and for electro-gymnastics for muscular contraction and reinforcement.

Rectangular threshold current 50 Hz, with 2 Hz sinusoidal superposition

e.g. for the efficient treatment of strain, contusions and haematomas

Part-no. SU0030

stainless steel electrodes type B (patented) removeable and slippable for contoured treatment. Inclusive suspension.

Part-no. SU0050

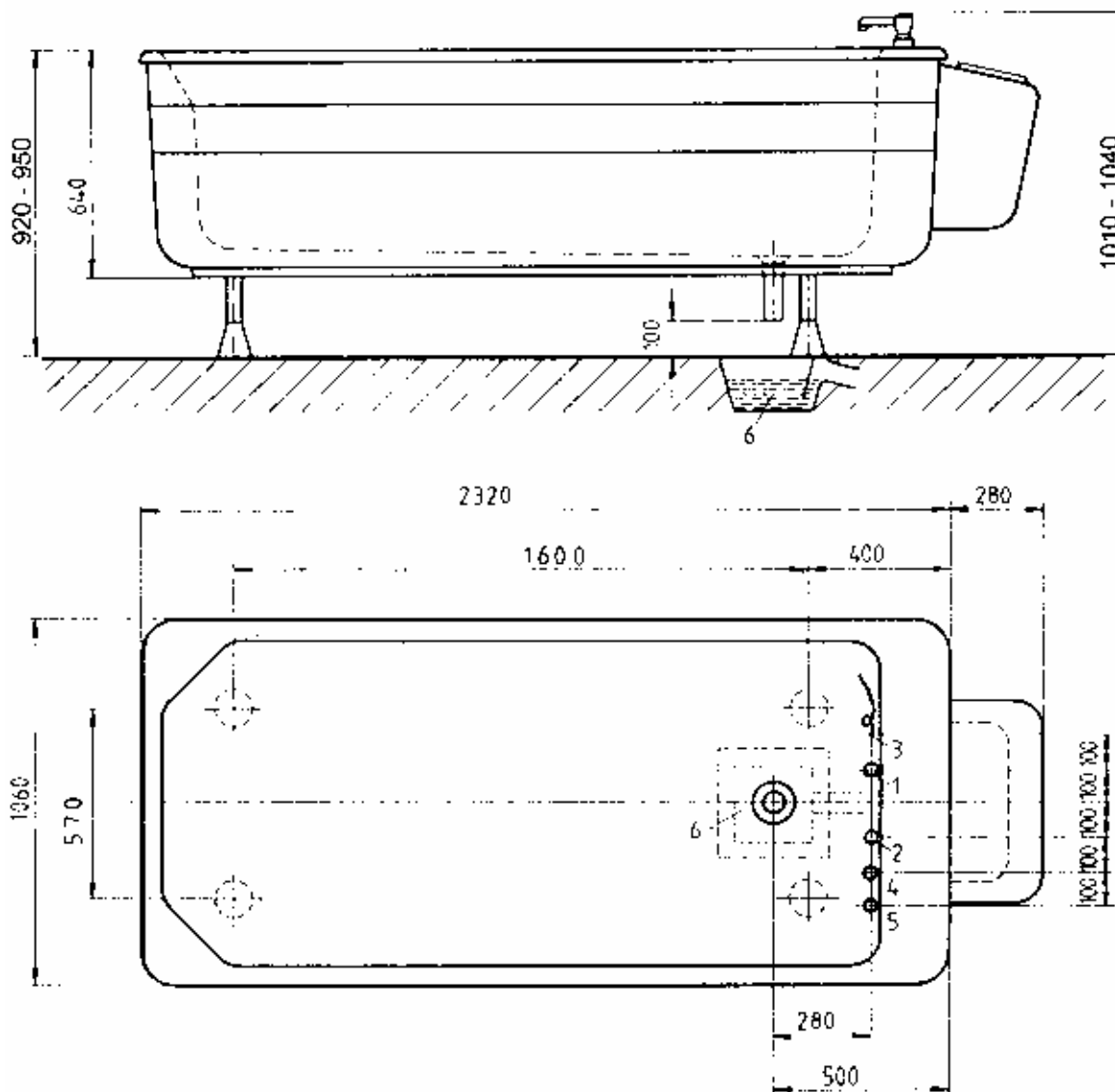
Dry run protection for the pump.

Part-no. SU0070

Filling unit with tub inlet 1 1/4" and filling valves for warm- and coldwater each 1".

Optimal extras: see overview sheet 08.01.01 and 08.01.02
Special fittings and accessories

Technical details subject to change



Combinationappliance
model Freiburg
type UW GI CO₂ 2000 AC
part-no. AU1185

On-site connections

1. cold water sleeve 1", flush with floor
2. warm water sleeve 1", flush with floor
3. elektr.-floor connection, 1,5m long, 3 phase current, 400 V/3/N/SL 1,5 mm², motor 1,6 kW, 4,2 A
4. CO₂ suction-off pipe, to the outside on the shortest possible way, sleeve 1", flush with floor
5. CO₂ copper pipe 10 x 1, protruding approx. 10 cm above floor level.
6. Drainage with odour trap Ø 100
40 mm sunk, capacity 3,5 l/sec.

In case of flush or raised installation, the flow-off capacity must be throttled down to 2 l/sec. Free outlet min. 10 cm.

On site safety measures:

Stop cock cold and warm water. All-pole circuit breaker within the room. Protection switch, nominal fault current max. 30 mA, UB=24V.

Within reach of the tub (2,50 m above, 1,25 m to the side) no parts, appliances, etc. conducting or connected to earth potential.

German safety regulations. Electric installation according to DIN IEC/VDE

If the tub was equipped with the emergency calling device, must a 2-wire cable installed.

Minimum door width for installation: 86 cm.

Weight: 220 Kg

Technical details subject to change

Underwatermassage appliance
in butterfly shape
modell Ergoform
type SUW 2100 K
part-no. AU1115

for the application of underwater jet massages and kineotherapy with additional space of movement about the head, consisting of:

Self-supporting plastic tub with integrated service panel. Double basin on 5 height-adjustable feet, provided with rubber caps. Tub useful volume up to 50 mm below the overflow approx. 1100 l. Choice of inside/outside colour according to colour chart.

Dimensions: interior approx. 2100 x 1900 x 600 mm,
exterior approx. 2570 x 1980 x 950 mm.

tub fittings:

3 handles, 1 plastic suction shell with sieve, 1 drainage and overflow connection 2 1/2". 1 plastic pump attached to the tub, capacity 200 l/min, 3 phase current 230/400 V, 1,6 kW, IP 44, with 1 motor protection switch. 1 iso transformer 230/24 V TÜV, 1 ON/OFF switch, 4 isolated built-in cocks for pressure control, hot and cold water filling, fittings made of red brass, 1 hand shower with holder, 1 tub inlet 1" made of plastic, 1 precision-manometer, 2 connecting high-pressure hoses 1", installation according to DIN 1988. 1 pressure pipe, 1 set of plastic spray heads 40/60/80/100/120/140 mm²,

CE - Sign

Tub hygienic according to DIN VDE 0750 (IEC 601-1) and MPBetreibV with Adisan (ZR0200) cleaning agent and Bayromed (ZR0100) active oxygen.

Following parts are production line included:

Part-no. SU0050

Dry run protection for the pump.

Part-no. SU0070

Filling unit with tub inlet 1 1/4" and filling valves for warm- and coldwater each 1".



Optimal extras: see overview sheet 08.01.01 and 08.01.02
Special fittings and accessories

Part-no. ZU1130

moveable electronic unit for electrogalvanic bath.
type GF-WA

Part-no. ZU1135

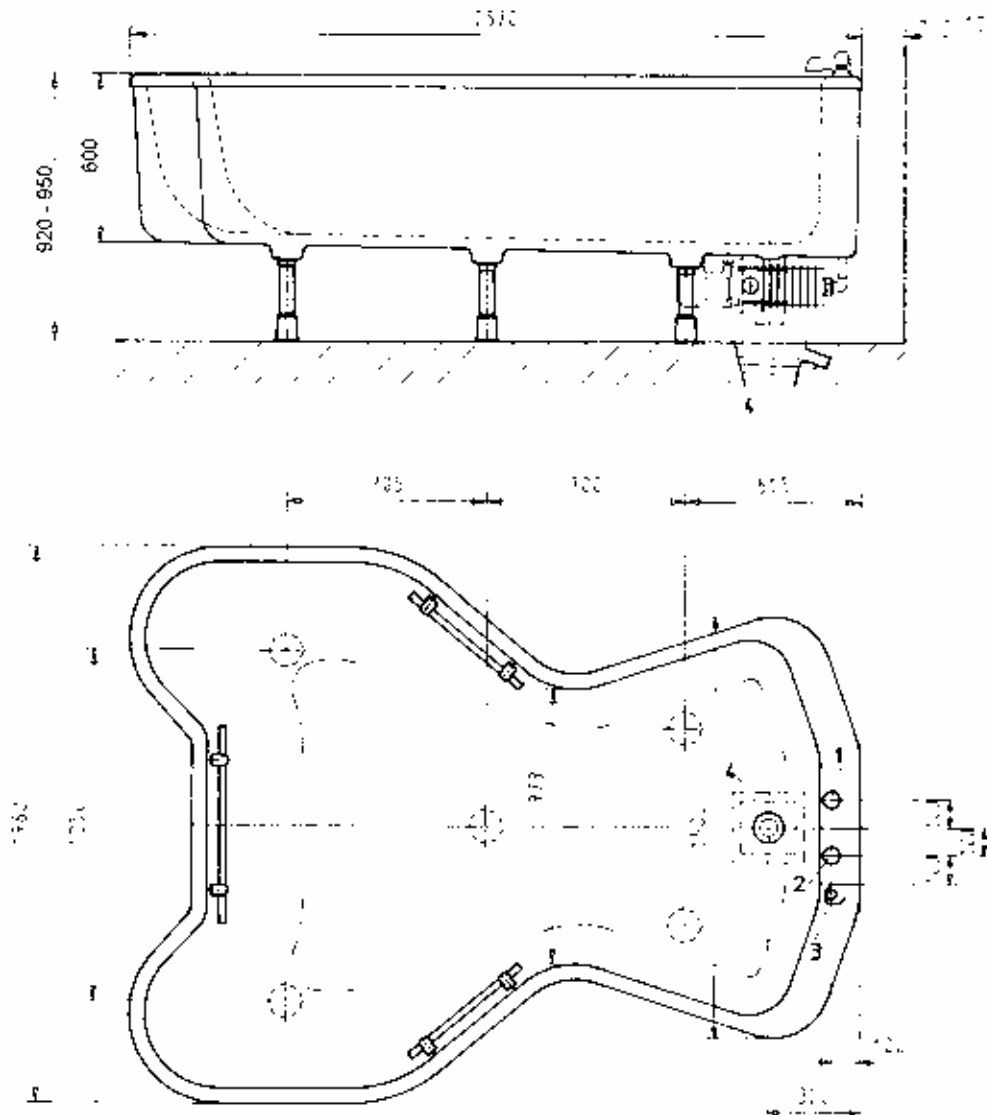
moveable electronic unit for electrogalvanic bath.
type GI-WA

Technical details subject to change

Trautwein GmbH, 79312 Emmendingen

Tel.: 07641/4677-30 Fax: 07641/4677-70
Internet: <http://www.trautwein-gmbh.com>

08.01.13



**Underwatermassage appliance
in butterfly shape
model Wörishofen
type SUW 2100 K**

On-site connections

1. cold water sleeve 1", flush with floor
2. warm water sleeve 1", flush with floor
3. elektr.-floor connection, 1,5 m long, 3 phase current, 400 V/3/N/SL 1,5 mm², motor 1,6 kW, 4,2 A
4. Drainage with odour trap Ø 100, 40 mm sunk, capacity 3,5 l/sec.
In case of flush or raised installation, the flow-off capacity must be throttled down to 2 l/sec. Free outlet min. 10 cm.

On site safety measures:

Stop cock cold and warm water
All-pole circuit breaker within the room
Protection switch, nominal fault current max. 30 mA, UB=24V, Potential equalizer
German safety regulations. Electric installation according to DIN IEC/VDE
If the tub was equipped with the emergency calling device, must a 2-wire cable installed.

Minimum door width for installation: 79 cm.

Attention: In front and behind the door must be enough room to handle the tub easily.

Weight: 300 Kg

Technical details subject to change

Mobile underwater massage appliance
model UW-Mobil
part-no. AU1230

for the application of underwater jet massages in pools or tub appliances, consisting of:

mobile appliance, with two-part plastic casing, revision part made of shock-proof polystyrene material.
colour: white

Dimensions: width 690 mm, depth 450 mm, height 600 mm

Equipment:

- 1 plastic pump elastically bearing-mounted on vibration dampers, performance 200 l/min., 3 phase current 230/400 V, 1,6 kW, IP 44
- 1 motor protection switch
- 1 isolating transformer 230/24 V TÜV
- 1 ON-OFF switch

Fittings:

- 1 control valve 1" made of red brass with special handles, handle made of plastic material
- 1 precision pressure gauge
- 1 massage hose connecting pipe with suspension hook for jet hose
- 1 suction hose connecting piece with suspension hook
- 1 set of plastic spray heads 40/60/80/100/120/140 mm²,
- 1 suction hose complete, with suction unit

CE - Sign

On-site connections

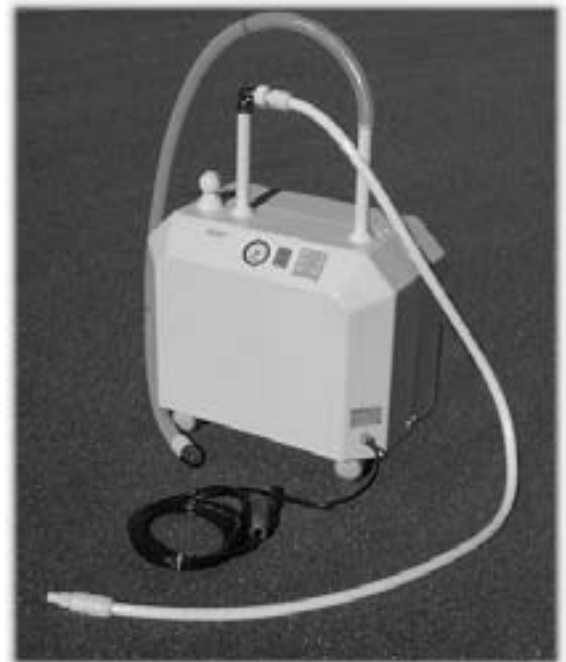
socket 400 V 3/N/SL (CEE 16A) 1,5 mm²

On-site safety measures

All-pole circuit breaker in the room
protector switch, nominal fault current max. 30 mA UB =24 V
electric installation according to DIN IEC/VDE

Optinal extras: see overview sheet 08.01.01 and 08.01.02

Special fittings and accessories



Technical details subject to change

Trautwein GmbH, 79312 Emmendingen

Tel.: 07641/4677-30 Fax: 07641/4677-70
Internet: <http://www.trautwein-gmbh.com>

08.01.14